

CATALOGUE NO. 8635.5

EMBARGOED UNTIL 11.30 A.M. 16 DECEMBER 1994

**TOURIST ACCOMMODATION, WESTERN AUSTRALIA
SEPTEMBER QUARTER 1994**

MAIN FEATURES

SEPTEMBER QUARTER 1994
COMPARED WITH
SEPTEMBER QUARTER 1993

HOTELS, MOTELS AND GUEST HOUSES

- Rooms available at 17,723 were almost unchanged although bed spaces increased by 1.3 per cent from 42,702 to 43,266.
- Room nights occupied increased by 4.7 per cent from 863,568 to 904,313 overall with changes by statistical division ranging from an increase of 9.4 per cent for South-West SD to a decrease of 17.6 per cent for Upper Great Southern SD.
- The room occupancy rate overall rose from 53.0 per cent to 55.6 per cent. Perth SD recorded the highest room occupancy rate at 71.4 per cent, an increase of 5.4 percentage points, followed by South Eastern SD at 56.5 per cent. Upper Great Southern SD recorded the lowest room occupancy rate of 31.6 per cent.
- Guest nights increased by 2.5 per cent from 1,401,839 to 1,436,314 and the bed occupancy rate rose from 35.7 per cent to 36.2 per cent.
- Guest arrivals rose by 3.9 per cent from 606,470 to 630,323 and the average length of stay was unchanged at 2.3 days overall.
- Takings from accommodation increased by 12.6 per cent from \$59.8m to \$67.4m while average takings per room night occupied rose from \$69 to \$74 overall, ranging from \$86 for Perth SD to \$44 for Midlands SD.

HOLIDAY FLATS, UNITS AND HOUSES

- The number of units, etc. available for short-term letting increased by 7.5 per cent from 2,097 to 2,255 while unit nights occupied increased by 17.8 per cent from 96,779 to 114,012.
- The unit occupancy rate rose from 50.2 per cent to 55.0 per cent.
- Unit lettings increased by 16.0 per cent from 22,585 to 26,190 and the average length of stay rose from 4.3 days to 4.4 days.
- Accommodation takings rose by 34.1 per cent from \$5.2m to \$6.9m with the average takings per unit night occupied increasing from \$53 to \$61.

CARAVAN PARKS

- Capacity available increased by 2.9 per cent from 28,534 to 29,353 powered and unpowered sites and cabins, etc.
- Long-term residents occupied 5,073 sites, etc. (17.3 per cent), while 2,251 sites (7.7 per cent) were permanently reserved but only casually occupied by their tenants and an average of 5,522 sites (18.8 per cent) were occupied by other short-term guests.
- Site nights occupied rose by 3.6 per cent from 1,140,442 to 1,181,828 while the site occupancy rate increased from 43.5 per cent to 43.8 per cent.
- Accommodation takings rose by 8.7 per cent from \$12.8m to \$13.9m.

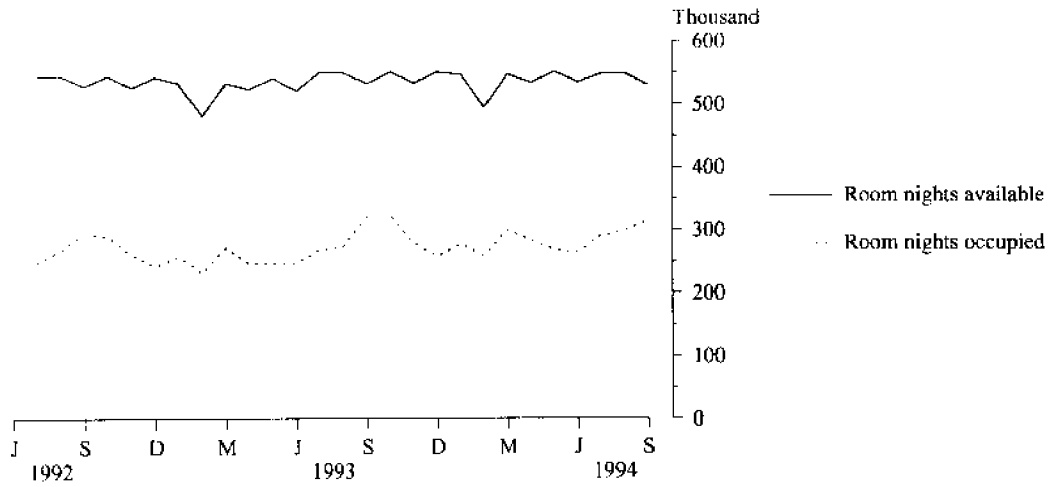
VISITOR HOSTELS

- Bed spaces available rose by 7.1 per cent from 2,841 to 3,042 while guest nights rose by 6.2 per cent from 96,456 to 102,400.
- The bed occupancy rate fell marginally from 36.9 per cent to 36.6 per cent.
- Guest arrivals increased by 23.9 per cent from 28,461 to 35,274 while the average length of stay decreased from 3.4 days to 2.9 days.
- Accommodation takings rose by 9.4 per cent to \$1.1m at an average of \$11 per guest night.

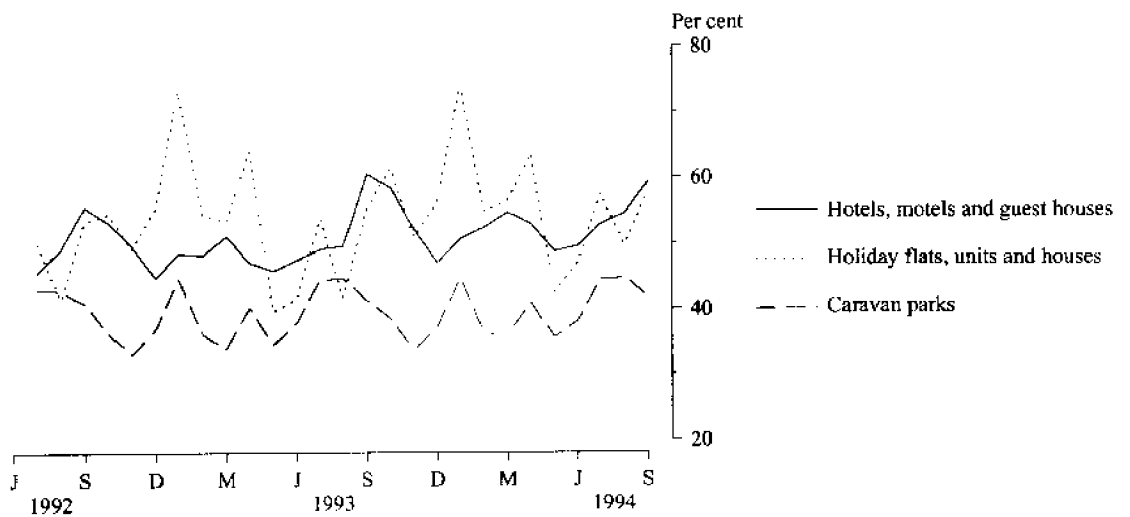
INQUIRIES

- *for further information about statistics in this publication and the availability of related unpublished statistics, contact Brian Hay on 008 077304 or any ABS office.*
- *for information about other ABS statistics and services, refer to the back page of this publication.*

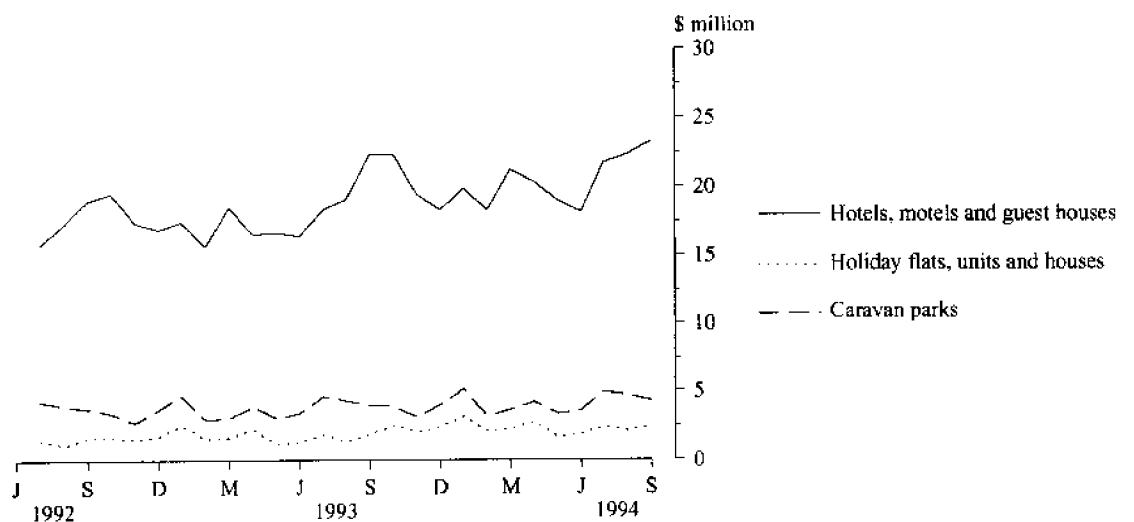
**MONTHLY ROOM NIGHTS AVAILABLE AND OCCUPIED:
HOTELS, MOTELS AND GUEST HOUSES,
WESTERN AUSTRALIA**



**MONTHLY OCCUPANCY RATES,
WESTERN AUSTRALIA**



**MONTHLY TAKINGS FROM ACCOMMODATION,
WESTERN AUSTRALIA**



CONTENTS

<i>Table</i>	<i>Page</i>	
"	Main features	1
"	Diagrams	2
1	Summaries of hotels, motels and guest houses, Perth Statistical Division and Western Australia	4
2	Summary of caravan parks, Perth Statistical Division and Western Australia	6
3	Summary of holiday flats, units and houses, Perth Statistical Division and Western Australia	7
4	Summary of visitor hostels, Western Australia	7
5	Hotels, motels and guest houses with facilities by star grading, Perth Statistical Division and Western Australia	8
"	Diagrams	10
6	Hotels, motels and guest houses by statistical division, Western Australia	11
7	Hotels, motels and guest houses with facilities: Statistical divisions and selected statistical local areas, Western Australia	14
8	Holiday flats, units and houses by statistical division, Western Australia	16
9	Holiday flats, units and houses by selected statistical local areas, Western Australia	17
10	Caravan parks: Statistical divisions and selected statistical local areas, Western Australia	18
11	Caravan parks by statistical division, Western Australia	20
12	Visitor hostels by statistical division, Western Australia	23
"	Explanatory Notes	24
"	Reference map – statistical divisions of Western Australia	27

TABLE 1 — SUMMARIES OF HOTELS, MOTELS AND GUEST HOUSES,
PERTH STATISTICAL DIVISION AND WESTERN AUSTRALIA (a)

Particulars	Unit	Quarter ended				Year ended			
		June 1993	September 1993	December 1993	March 1994	June 1994	September 1994	September 1993	September 1994
		PERTH STATISTICAL DIVISION				HOTELS, MOTELS AND GUEST HOUSES WITH FACILITIES			
Establishments	No.	86	86	87	87	87	87
Guest rooms	No.	6,742	6,743	6,780	6,776	6,769	6,741
Bed spaces	No.	17,140	17,148	17,236	17,272	17,274	17,197
Employment (persons)	No.	5,289	5,282	5,631	5,589	5,322	5,465
Room nights occupied	No.	370,792	417,375	446,283	444,490	412,984	448,624	1,616,746	1,752,381
Room occupancy rate	per cent	60.4	67.3	71.5	72.9	67.0	72.5	65.9	71.0
Guest nights	No.	606,690	684,608	749,202	746,907	668,383	712,295	2,676,257	2,876,787
Bed occupancy rate	per cent	38.9	43.4	47.2	48.0	42.5	45.1	43.0	45.7
Guest arrivals	No.	222,406	254,243	280,128	261,064	245,078	260,798	956,630	1,047,068
Average length of stay	days	2.7	2.7	2.7	2.9	2.7	2.7	2.8	2.7
Takings from accommodation	\$'000	29,739	34,256	37,660	37,992	34,768	39,459	131,155	149,879
		WESTERN AUSTRALIA — LICENSED HOTELS WITH FACILITIES							
Establishments	No.	162	160	161	162	161	161
Guest rooms	No.	8,107	8,118	8,158	8,189	8,185	8,170
Bed spaces	No.	19,650	19,718	19,803	19,893	19,996	20,062
Employment (persons)	No.	6,681	6,768	7,149	7,044	6,836	7,011
Room nights occupied	No.	375,572	441,769	443,800	422,925	420,285	467,545	1,609,109	1,754,555
Room occupancy rate	per cent	51.0	59.2	59.1	57.5	56.4	62.3	54.6	58.9
Guest nights	No.	582,639	686,763	709,306	664,480	640,503	712,154	2,515,690	2,726,443
Bed occupancy rate	per cent	32.6	37.9	38.9	37.2	35.2	38.7	35.3	37.5
Guest arrivals	No.	247,963	313,710	302,729	263,754	268,870	313,198	1,089,139	1,148,551
Average length of stay	days	2.3	2.2	2.3	2.5	2.4	2.3	2.3	2.4
Takings from accommodation	\$'000	29,514	35,537	36,830	36,001	34,832	40,420	129,271	148,082
		WESTERN AUSTRALIA — MOTELS AND GUEST HOUSES WITH FACILITIES							
Establishments	No.	166	166	167	168	173	173
Guest rooms	No.	6,470	6,493	6,536	6,531	6,569	6,563
Bed spaces	No.	17,971	17,960	18,199	18,312	18,300	18,278
Employment (persons)	No.	2,341	2,533	2,475	2,550	2,614	2,717
Room nights occupied	No.	292,019	340,477	331,609	330,809	312,732	350,354	1,248,660	1,325,504
Room occupancy rate	per cent	49.6	57.0	55.1	56.3	52.5	58.0	52.7	55.5
Guest nights	No.	516,772	612,053	602,524	623,497	562,493	616,677	2,266,916	2,405,191
Bed occupancy rate	per cent	31.6	37.0	36.0	37.9	33.8	36.7	34.5	36.1
Guest arrivals	No.	216,412	256,066	261,075	253,069	234,575	279,633	928,240	1,028,352
Average length of stay	days	2.4	2.4	2.3	2.5	2.4	2.2	2.4	2.3
Takings from accommodation	\$'000	18,237	21,826	20,763	20,976	20,134	24,060	77,668	85,933
		WESTERN AUSTRALIA — TOTAL HOTELS, MOTELS AND GUEST HOUSES WITH FACILITIES							
Establishments	No.	328	326	328	330	334	334
Guest rooms	No.	14,577	14,611	14,694	14,720	14,754	14,733
Bed spaces	No.	37,621	37,678	38,002	38,205	38,296	38,340
Employment (persons)	No.	9,022	9,301	9,624	9,594	9,450	9,728
Room nights occupied	No.	667,591	782,246	775,409	753,734	733,017	817,899	2,857,769	3,080,059
Room occupancy rate	per cent	50.4	58.2	57.4	57.0	54.7	60.4	53.8	57.4
Guest nights	No.	1,099,411	1,298,816	1,311,830	1,287,977	1,202,996	1,328,831	4,782,606	5,131,634
Bed occupancy rate	per cent	32.1	37.5	37.5	37.5	34.5	37.7	34.9	36.8
Guest arrivals	No.	464,375	569,776	563,804	516,823	503,445	592,831	2,017,379	2,176,903
Average length of stay	days	2.4	2.3	2.3	2.5	2.4	2.2	2.4	2.4
Takings from accommodation	\$'000	47,751	57,364	57,593	56,977	54,966	64,480	206,938	234,015

TABLE 1 — SUMMARIES OF HOTELS, MOTELS AND GUEST HOUSES,
PERTH STATISTICAL DIVISION AND WESTERN AUSTRALIA (a)—continued

Particulars	Unit	Quarter ended				Year ended			
		June 1993	September 1993	December 1993	March 1994	June 1994	September 1994	September 1993	September 1994
PERTH STATISTICAL DIVISION — HOTELS, MOTELS AND GUEST HOUSES WITHOUT FACILITIES									
Establishments	No.	10	10	9	8	9	9
Guest rooms	No.	362	363	357	338	338	339
Bed spaces	No.	564	566	561	501	532	539
Employment (persons)	No.	296	278	282	268	258	233
Room nights occupied	No.	12,306	13,994	15,024	16,574	14,528	14,168	52,702	60,294
Room occupancy rate	per cent	37.4	41.9	45.7	54.5	47.2	48.2	42.6	48.8
Guest nights	No.	16,059	17,933	19,242	21,566	17,932	17,478	67,926	76,218
Bed occupancy rate	per cent	31.3	34.4	37.3	47.8	37.0	38.5	36.1	40.0
Guest arrivals	No.	4,983	5,311	5,579	6,106	4,644	4,301	19,986	20,630
Average length of stay	days	3.2	3.4	3.4	3.5	3.9	4.1	3.4	3.7
Takings from accommodation	\$'000	290	324	376	393	326	310	1,235	1,405
WESTERN AUSTRALIA — HOTELS, MOTELS AND GUEST HOUSES WITHOUT FACILITIES									
Establishments	No.	136	135	129	128	136	129
Guest rooms	No.	2,847	3,109	3,055	2,930	3,049	2,990
Bed spaces	No.	4,830	5,024	4,959	4,802	5,061	4,926
Employment (persons)	No.	1,085	1,133	1,023	999	1,023	999
Room nights occupied	No.	72,023	81,322	82,654	81,035	83,129	86,414	295,914	333,232
Room occupancy rate	per cent	27.9	28.5	29.4	30.7	30.0	31.6	28.3	30.4
Guest nights	No.	94,104	103,023	103,970	106,223	102,549	107,483	381,363	420,225
Bed occupancy rate	per cent	21.5	22.4	22.8	24.6	22.3	24.0	22.1	23.4
Guest arrivals	No.	32,990	36,694	35,534	34,523	32,484	37,492	135,882	140,033
Average length of stay	days	2.9	2.8	2.9	3.1	3.2	2.9	2.8	3.0
Takings from accommodation	\$'000	2,007	2,457	2,550	2,426	2,547	2,885	8,356	10,408
PERTH STATISTICAL DIVISION — TOTAL HOTELS, MOTELS AND GUEST HOUSES									
Establishments	No.	96	96	96	95	96	96
Guest rooms	No.	7,104	7,106	7,137	7,114	7,107	7,080
Bed spaces	No.	17,704	17,714	17,797	17,773	17,806	17,736
Employment (persons)	No.	5,585	5,560	5,913	5,857	5,580	5,698
Room nights occupied	No.	383,098	431,369	461,307	461,064	427,512	462,792	1,669,448	1,812,675
Room occupancy rate	per cent	59.3	66.0	70.3	72.0	66.1	71.4	64.8	69.9
Guest nights	No.	622,749	702,541	768,444	768,473	686,315	729,773	2,744,183	2,953,005
Bed occupancy rate	per cent	38.7	43.1	46.9	48.0	42.4	44.9	42.8	45.6
Guest arrivals	No.	227,389	259,554	285,707	267,170	249,722	265,099	976,616	1,067,698
Average length of stay	days	2.7	2.7	2.7	2.9	2.7	2.8	2.8	2.8
Takings from accommodation	\$'000	30,029	34,580	38,036	38,385	35,094	39,769	132,390	151,284
WESTERN AUSTRALIA — TOTAL HOTELS, MOTELS AND GUEST HOUSES									
Establishments	No.	464	461	457	458	470	463
Guest rooms	No.	17,424	17,720	17,749	17,650	17,803	17,723
Bed spaces	No.	42,451	42,702	42,961	43,007	43,357	43,266
Employment (persons)	No.	10,107	10,434	10,647	10,593	10,473	10,727
Room nights occupied	No.	739,614	863,568	858,063	834,769	816,146	904,313	3,153,683	3,413,291
Room occupancy rate	per cent	46.7	53.0	52.5	52.6	50.4	55.6	49.6	52.8
Guest nights	No.	1,193,515	1,401,839	1,415,800	1,394,200	1,305,545	1,436,314	5,163,969	5,551,859
Bed occupancy rate	per cent	30.9	35.7	35.8	36.1	33.1	36.2	33.5	35.3
Guest arrivals	No.	497,365	606,470	599,338	551,346	535,929	630,323	2,153,261	2,316,936
Average length of stay	days	2.4	2.3	2.4	2.5	2.4	2.3	2.4	2.4
Takings from accommodation	\$'000	49,758	59,821	60,143	59,402	57,513	67,365	215,294	244,423

(a) From December quarter 1993, establishments with fewer than 5 rooms have been formally excluded from the scope of this collection. See Explanatory Note 2 (page 24).

TABLE 2 — SUMMARY OF CARAVAN PARKS, PERTH STATISTICAL DIVISION AND WESTERN AUSTRALIA

Particulars	Unit	Quarter ended					Year ended		
		June 1993	September 1993	December 1993	March 1994	June 1994	September 1994	September 1993	September 1994
PERTH STATISTICAL DIVISION — CARAVAN PARKS									
Establishments	No.	34	35	35	34	34	34
Capacity									
On-site vans	No.	463	442	434	424	429	429
Other powered sites	No.	2,855	2,838	2,881	2,858	2,907	2,912
Unpowered sites	No.	496	516	446	452	532	508
Cabins, etc.	No.	163	170	206	211	219	203
Total capacity	No.	3,977	3,966	3,967	3,945	4,087	4,052
Sites occupied by long-term guests	No.	1,685	1,695	1,751	1,860	1,859	1,803
Other sites permanently reserved	No.	174	175	118	121	108	117
Employment (persons)	No.	141	139	146	144	139	152
Site nights occupied	No.	200,411	210,318	198,590	210,590	212,456	216,077	828,654	837,713
Site occupancy rate	per cent	55.4	57.6	54.4	59.3	57.1	58.0	57.2	57.2
Guest arrivals	No.	8,049	9,594	8,622	18,162	23,345	12,861	38,416	62,990
Takings from accommodation	\$'000	1,991	2,173	2,309	2,396	2,311	2,538	8,319	9,554
WESTERN AUSTRALIA — SHORT-TERM CARAVAN PARKS									
Establishments	No.	187	197	199	198	198	205
Capacity									
On-site vans	No.	1,058	1,144	1,167	1,173	1,166	1,126
Other powered sites	No.	10,622	11,468	11,657	11,838	12,024	12,206
Unpowered sites	No.	3,928	3,988	4,005	4,018	4,024	4,243
Cabins, etc.	No.	807	820	838	843	860	870
Total capacity	No.	16,415	17,420	17,667	17,872	18,074	18,445
Sites occupied by long-term guests	No.	1,058	1,228	1,175	1,221	1,269	1,275
Other sites permanently reserved	No.	1,595	1,914	1,974	1,937	1,981	2,068
Employment (persons)	No.	643	665	696	690	711	731
Site nights occupied	No.	467,953	638,120	514,501	563,264	543,653	673,572	2,014,286	2,294,990
Site occupancy rate	per cent	31.3	40.0	31.7	35.1	33.1	39.7	33.2	34.9
Guest arrivals	No.	211,690	285,641	210,022	262,876	224,308	284,709	904,229	981,915
Takings from accommodation	\$'000	5,204	7,100	5,796	6,665	5,760	7,684	22,794	25,904
WESTERN AUSTRALIA — LONG-TERM CARAVAN PARKS									
Establishments	No.	119	117	113	113	113	107
Capacity									
On-site vans	No.	1,209	1,070	1,070	1,087	1,082	1,143
Other powered sites	No.	8,219	7,567	7,391	7,413	7,445	7,238
Unpowered sites	No.	1,942	1,945	1,900	1,880	2,020	1,963
Cabins, etc.	No.	523	532	564	565	581	564
Total capacity	No.	11,893	11,114	10,925	10,945	11,128	10,908
Sites occupied by long-term guests	No.	3,823	3,777	3,698	3,833	3,900	3,798
Other sites permanently reserved	No.	589	277	259	273	279	183
Employment (persons)	No.	422	396	388	390	403	395
Site nights occupied	No.	499,577	502,322	447,835	451,516	472,563	508,256	1,991,755	1,880,170
Site occupancy rate	per cent	46.2	49.1	44.6	45.8	46.7	50.6	46.7	46.9
Guest arrivals	No.	70,261	86,823	49,840	53,746	77,177	90,519	278,385	271,282
Takings from accommodation	\$'000	5,129	5,725	5,245	5,290	5,375	6,256	20,922	22,166
WESTERN AUSTRALIA — TOTAL CARAVAN PARKS									
Establishments	No.	306	314	312	311	311	312
Capacity									
On-site vans	No.	2,267	2,214	2,237	2,260	2,248	2,269
Other powered sites	No.	18,841	19,035	19,048	19,251	19,469	19,444
Unpowered sites	No.	5,870	5,933	5,905	5,898	6,044	6,206
Cabins, etc.	No.	1,330	1,352	1,402	1,408	1,441	1,434
Total capacity	No.	28,308	28,534	28,592	28,817	29,202	29,353
Sites occupied by long-term guests	No.	4,881	5,005	4,873	5,054	5,169	5,073
Other sites permanently reserved	No.	2,184	2,191	2,233	2,210	2,260	2,251
Employment (persons)	No.	1,065	1,061	1,084	1,080	1,114	1,126
Site nights occupied	No.	967,530	1,140,442	962,336	1,014,780	1,016,216	1,181,828	4,006,041	4,175,160
Site occupancy rate	per cent	37.6	43.5	36.6	39.2	38.2	43.8	38.8	39.5
Guest arrivals	No.	281,951	372,464	259,862	316,622	301,485	375,228	1,182,614	1,253,197
Takings from accommodation	\$'000	10,333	12,825	11,041	11,954	11,135	13,940	43,715	48,071

TABLE 3 — SUMMARY OF HOLIDAY FLATS, UNITS AND HOUSES,
PERTH STATISTICAL DIVISION AND WESTERN AUSTRALIA

Particulars	Unit	Quarter ended				Year ended			
		June 1993	September 1993	December 1993	March 1994	June 1994	September 1994	September 1993	September 1994
PERTH STATISTICAL DIVISION									
Letting entities	No.	30	30	30	30	29	29
Flats, units and houses									
Single bedroom	No.	397	398	380	383	390	390
Multiple bedroom	No.	629	684	700	711	733	748
<i>Total flats, units and houses</i>	<i>No.</i>	<i>1,026</i>	<i>1,082</i>	<i>1,080</i>	<i>1,094</i>	<i>1,123</i>	<i>1,138</i>
Bed spaces	No.	4,198	4,386	4,494	4,417	4,632	4,746
Employment (persons) (a)	No.	218	204	227	230	224	237
Unit nights occupied	No.	51,988	55,571	66,855	74,475	60,762	62,782	221,364	264,874
Unit occupancy rate	per cent	56.1	55.8	67.3	75.6	59.5	60.0	61.2	65.4
Unit lettings	No.	9,794	9,843	12,459	12,688	11,203	11,583	40,634	47,933
Average length of stay	days	5.3	5.6	5.4	5.9	5.4	5.4	5.4	5.5
Takings from accommodation	\$'000	2,865	3,005	4,221	4,589	3,812	3,954	12,142	16,577
WESTERN AUSTRALIA									
Letting entities	No.	99	106	107	107	106	106
Flats, units and houses									
Single bedroom	No.	511	527	563	558	569	573
Multiple bedroom	No.	1,482	1,570	1,627	1,640	1,655	1,682
<i>Total flats, units and houses</i>	<i>No.</i>	<i>1,993</i>	<i>2,097</i>	<i>2,190</i>	<i>2,198</i>	<i>2,224</i>	<i>2,255</i>
Bed spaces	No.	9,245	9,874	10,378	10,249	10,501	10,712
Employment (persons) (a)	No.	430	440	474	471	485	502
Unit nights occupied	No.	87,250	96,779	113,238	122,718	103,130	114,012	381,721	453,098
Unit occupancy rate	per cent	48.3	50.2	56.2	62.0	51.0	55.0	52.9	56.0
Unit lettings	No.	20,252	22,585	25,623	24,606	23,262	26,190	85,831	99,681
Average length of stay	days	4.3	4.3	4.4	5.0	4.4	4.4	4.4	4.5
Takings from accommodation	\$'000	4,836	5,153	6,915	7,584	6,283	6,908	20,881	27,690

(a) Employment numbers exclude real estate agents and their employees.

TABLE 4 — SUMMARY OF VISITOR HOSTELS, WESTERN AUSTRALIA

Particulars	Unit	Quarter ended				Year ended			
		June 1993	September 1993	December 1993	March 1994	June 1994	September 1994	September 1993	September 1994
Establishments	No.	51	52	54	54	57	56
Bed spaces	No.	3,112	2,841	2,993	3,068	3,119	3,042
Employment (persons)	No.	143	146	138	135	150	157
Guest nights	No.	91,313	96,456	103,780	113,992	102,136	102,400	392,139	422,308
Bed occupancy rate	per cent	32.2	36.9	37.7	41.9	36.0	36.6	36.4	38.0
Guest arrivals	No.	29,320	28,461	37,881	37,941	32,326	35,274	123,561	143,422
Average length of stay	days	3.1	3.4	2.7	3.0	3.2	2.9	3.2	2.9
Takings from accommodation	\$'000	1,031	1,038	1,073	1,228	1,115	1,136	4,178	4,552

TABLE 5 — HOTELS, MOTELS AND GUEST HOUSES WITH FACILITIES BY STAR GRADING,
PERTH STATISTICAL DIVISION AND WESTERN AUSTRALIA (a)

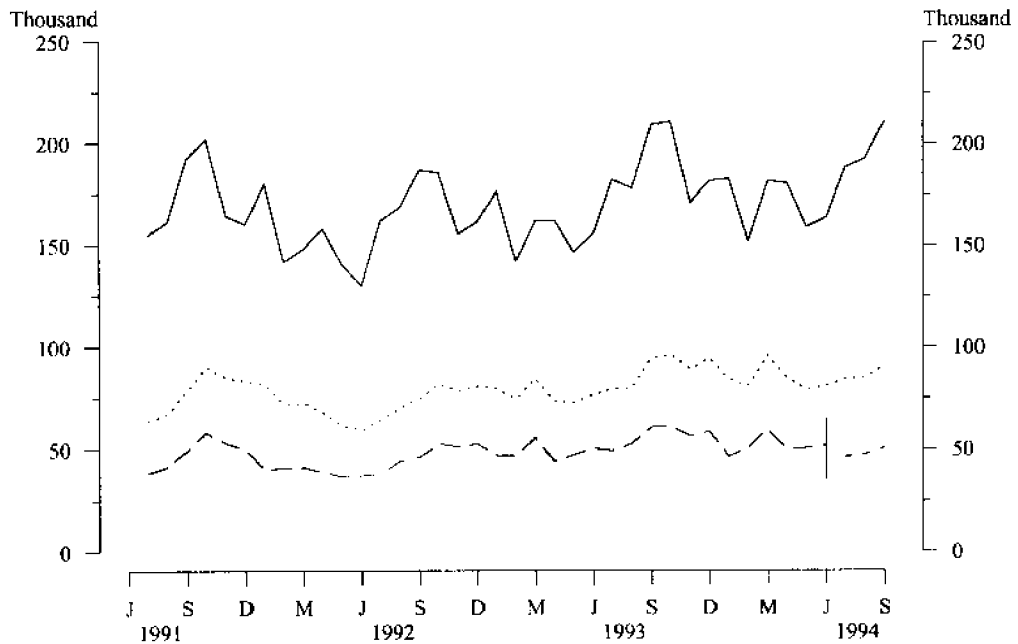
Particulars	Perth Statistical Division				Total
	Star grading				
	1 and 2	3	4 and 5	Ungraded	
ESTABLISHMENTS, CAPACITY AND EMPLOYMENT					
<i>September quarter 1993—</i>					
Establishments	24	30	14	18	86
Guest rooms	1,016	2,225	3,037	465	6,743
Bed spaces	2,725	5,950	7,332	1,141	17,148
Employment (persons)	448	1,177	3,228	429	5,282
<i>September quarter 1994—</i>					
Establishments	27	31	14	15	87
Guest rooms	1,002	2,324	3,040	375	6,741
Bed spaces	2,736	6,301	7,322	838	17,197
Employment (persons)	503	1,168	3,339	455	5,465
ROOM NIGHTS OCCUPIED					
<i>September quarter 1993</i>	52,898	144,031	200,720	19,726	417,375
<i>1994—</i>					
July	17,464	50,468	70,419	5,291	143,642
August	17,558	48,186	76,987	5,635	148,366
September	20,242	54,363	75,604	6,407	156,616
<i>September quarter 1994</i>	55,264	153,017	223,010	17,333	448,624
ROOM OCCUPANCY RATES (per cent)					
<i>September quarter 1993</i>	56.6	70.4	71.8	46.1	67.3
<i>1994—</i>					
July	56.9	70.1	74.7	47.1	69.0
August	56.7	67.0	81.7	48.5	71.1
September	67.3	78.2	82.9	57.0	77.5
<i>September quarter 1994</i>	60.3	71.7	79.7	50.8	72.5
GUEST NIGHTS					
<i>September quarter 1993</i>	91,155	268,358	292,687	32,408	684,608
<i>1994—</i>					
July	30,419	93,398	103,462	7,652	234,931
August	29,308	84,123	108,450	8,113	229,994
September	33,177	94,061	110,568	9,564	247,370
<i>September quarter 1994</i>	92,904	271,582	322,480	25,329	712,295
BED OCCUPANCY RATES (per cent)					
<i>September quarter 1993</i>	36.4	49.0	43.4	30.9	43.4
<i>1994—</i>					
July	36.3	47.8	45.6	30.3	44.2
August	34.7	43.2	47.8	31.2	43.2
September	40.4	50.0	50.3	38.0	48.0
<i>September quarter 1994</i>	37.1	47.0	47.9	33.2	45.1
GUEST ARRIVALS					
<i>September quarter 1993</i>	33,498	81,299	127,699	11,747	254,243
<i>1994—</i>					
July	12,562	28,872	40,489	2,680	84,603
August	12,393	27,851	42,494	2,458	85,196
September	13,495	30,050	44,617	2,837	90,999
<i>September quarter 1994</i>	38,450	86,773	127,600	7,975	260,798
AVERAGE LENGTH OF STAY (days)					
<i>September quarter 1993</i>	2.7	3.3	2.3	2.8	2.7
<i>September quarter 1994</i>	2.4	3.1	2.5	3.2	2.7
TAKINGS FROM ACCOMMODATION (\$'000)					
<i>September quarter 1993</i>	2,608	8,755	21,954	939	34,256
<i>1994—</i>					
July	925	3,367	8,041	198	12,531
August	902	3,143	8,958	204	13,206
September	1,108	3,596	8,768	250	13,722
<i>September quarter 1994</i>	2,935	10,106	25,767	651	39,459

TABLE 5 — HOTELS, MOTELS AND GUEST HOUSES WITH FACILITIES BY STAR GRADING,
PERTH STATISTICAL DIVISION AND WESTERN AUSTRALIA (a)—continued

Particulars	Western Australia						Total
	Star grading						
	1	2	3	4	5	Ungraded	
ESTABLISHMENTS, CAPACITY AND EMPLOYMENT							
<i>September quarter 1993—</i>							
Establishments	10	125	108	9	8	66	326
Guest rooms	172	3,640	5,846	959	2,332	1,662	14,611
Bed spaces	380	9,235	15,847	2,726	5,583	3,907	37,678
Employment (persons)	152	1,677	2,900	1,123	2,403	1,046	9,301
<i>September quarter 1994—</i>							
Establishments	10	125	115	11	9	64	334
Guest rooms	145	3,465	6,195	901	2,420	1,607	14,733
Bed spaces	289	8,871	17,067	2,343	5,986	3,784	38,340
Employment (persons)	137	1,727	3,024	1,162	2,513	1,165	9,728
ROOM NIGHTS OCCUPIED							
<i>September quarter 1993</i>	4,997	160,462	338,245	65,150	147,237	66,155	782,246
<i>1994—</i>							
July	1,089	48,761	116,253	22,131	53,130	20,392	261,756
August	1,134	50,702	115,739	22,718	58,770	21,305	270,368
September	1,349	56,755	125,653	22,846	57,684	21,488	285,775
<i>September quarter 1994</i>	3,572	156,218	357,645	67,695	169,584	63,185	817,899
ROOM OCCUPANCY RATES (per cent)							
<i>September quarter 1993</i>	31.6	47.9	62.9	73.8	68.6	43.4	58.2
<i>1994—</i>							
July	24.2	45.6	60.5	79.2	70.8	41.3	57.4
August	25.2	47.2	60.3	81.3	78.3	42.8	59.2
September	31.0	54.6	67.7	84.5	79.5	44.6	64.7
<i>September quarter 1994</i>	26.8	49.1	62.8	81.7	76.2	42.9	60.4
GUEST NIGHTS							
<i>September quarter 1993</i>	7,644	265,203	592,906	105,358	212,458	115,247	1,298,816
<i>1994—</i>							
July	1,543	80,408	207,185	33,536	80,420	36,189	439,281
August	1,733	80,161	192,154	33,152	84,639	35,984	427,823
September	2,063	90,914	212,510	34,987	85,690	35,563	461,727
<i>September quarter 1994</i>	5,339	251,483	611,849	101,675	250,749	107,736	1,328,831
BED OCCUPANCY RATES (per cent)							
<i>September quarter 1993</i>	21.9	31.2	40.7	42.0	41.4	32.1	37.5
<i>1994—</i>							
July	17.2	29.4	39.2	46.2	43.3	31.0	37.0
August	19.3	29.2	36.4	45.6	45.6	30.7	36.0
September	23.8	34.2	41.6	49.8	47.7	31.3	40.2
<i>September quarter 1994</i>	20.1	30.9	39.0	47.2	45.5	31.0	37.7
GUEST ARRIVALS							
<i>September quarter 1993</i>	3,939	132,534	253,311	39,443	99,423	41,126	569,776
<i>1994—</i>							
July	965	41,376	87,749	10,894	33,575	14,026	188,585
August	1,003	42,200	89,018	12,864	33,227	14,454	192,766
September	1,337	49,931	97,399	15,001	33,592	14,220	211,480
<i>September quarter 1994</i>	3,305	133,507	274,166	38,759	100,394	42,700	592,831
AVERAGE LENGTH OF STAY (days)							
<i>September quarter 1993</i>	1.9	2.0	2.3	2.7	2.1	2.8	2.3
<i>September quarter 1994</i>	1.6	1.9	2.2	2.6	2.5	2.5	2.2
TAKINGS FROM ACCOMMODATION (\$'000)							
<i>September quarter 1993</i>	168	8,000	21,895	6,401	16,696	4,203	57,364
<i>1994</i>							
July	37	2,559	7,976	2,339	6,209	1,600	20,720
August	43	2,574	7,833	2,430	6,981	1,556	21,419
September	53	2,994	8,482	2,412	6,859	1,541	22,341
<i>September quarter 1994</i>	132	8,127	24,292	7,181	20,050	4,697	64,480

(a) From December quarter 1993, establishments with fewer than 5 rooms have been formally excluded from the scope of this collection. See Explanatory Note 2 (page 24).

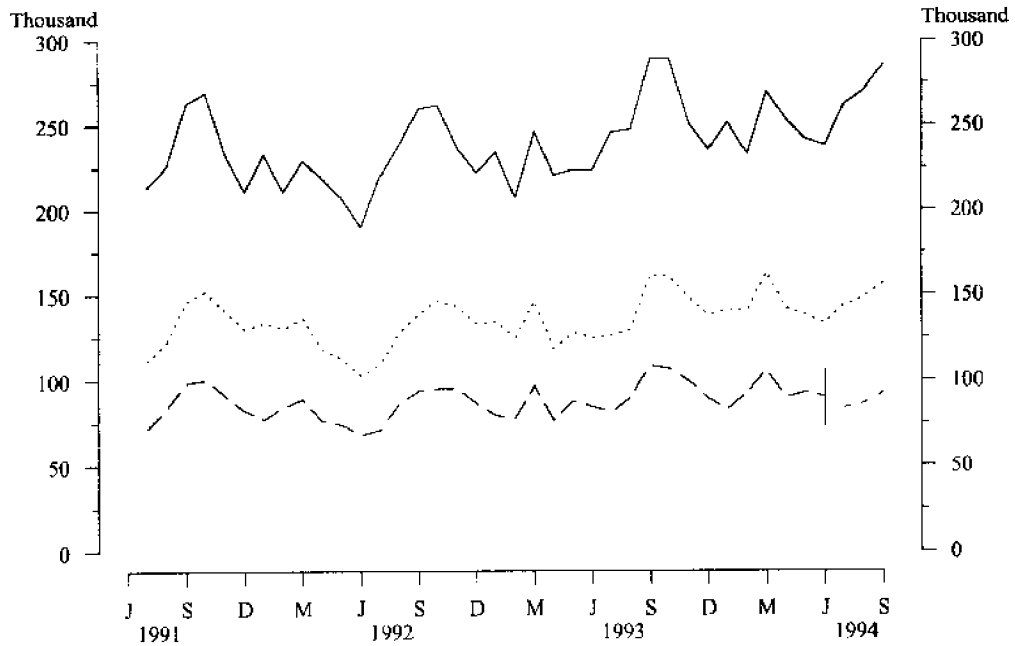
**MONTHLY GUEST ARRIVALS,
HOTELS, MOTELS AND GUEST HOUSES WITH FACILITIES**



(a) From 1 July 1994, the area of Perth City has been reduced with the creation of the new towns of Cambridge, Shepperton and Vincent.

- Western Australia
- Perth Statistical Division
- Perth City (a)
- Perth City (a)

**MONTHLY ROOM NIGHTS OCCUPIED,
HOTELS, MOTELS AND GUEST HOUSES WITH FACILITIES**



(a) From 1 July 1994, the area of Perth City has been reduced with the creation of the new towns of Cambridge, Shepperton and Vincent.

- Western Australia
- Perth Statistical Division
- Perth City (a)
- Perth City (a)

TABLE 6 — HOTELS, MOTELS AND GUEST HOUSES BY STATISTICAL DIVISION,
WESTERN AUSTRALIA (a)

Particulars	Perth (SD)				South-West (SD)				Lower Great Southern (SD)			
	Establishments with facilities		Estab. without facilities	Total	Establishments with facilities		Estab. without facilities	Total	Establishments with facilities		Estab. without facilities	Total
	Licensed hotels	Motels, etc.			Licensed hotels	Motels, etc.			Licensed hotels	Motels, etc.		
ESTABLISHMENTS, CAPACITY AND EMPLOYMENT												
September quarter 1993												
Establishments	46	40	10	96	23	42	29	94	5	18	19	42
Guest rooms	4,336	2,407	363	7,106	747	1,278	383	2,408	151	563	286	1,000
Bed spaces	10,558	6,590	566	17,714	1,951	3,865	756	6,572	355	1,553	529	2,437
Employment (persons)	4,256	1,026	278	5,560	704	455	211	1,370	112	155	134	401
September quarter 1994												
Establishments	45	42	9	96	26	46	27	99	5	18	20	43
Guest rooms	4,319	2,422	339	7,080	825	1,302	361	2,488	151	566	272	989
Bed spaces	10,524	6,673	539	17,736	2,206	3,944	719	6,869	343	1,577	492	2,412
Employment (persons)	4,418	1,047	233	5,698	766	517	196	1,479	118	152	110	380
ROOM NIGHTS OCCUPIED												
September quarter 1993	265,151	152,224	13,994	431,369	22,693	47,744	7,390	77,827	4,289	18,849	5,389	28,527
1994—												
July	92,138	51,504	4,678	148,320	8,526	16,103	2,447	27,076	1,429	5,372	1,473	8,274
August	98,124	50,242	4,723	153,089	8,031	15,799	2,318	26,148	1,305	5,950	1,331	8,586
September	99,611	57,005	4,767	161,383	9,412	19,441	3,090	31,943	1,653	8,730	1,775	12,158
September quarter 1994	289,873	158,751	14,168	462,792	25,969	51,343	7,855	85,167	4,387	20,052	4,579	29,018
ROOM OCCUPANCY RATES (per cent)												
September quarter 1993	66.5	68.7	41.9	66.0	33.0	40.6	21.0	35.1	30.9	36.4	20.5	31.0
1994—												
July	69.2	68.6	45.1	67.9	33.3	39.9	21.9	35.1	30.5	30.6	17.5	27.0
August	73.4	66.9	48.8	70.1	31.4	39.1	20.7	33.9	27.9	33.9	15.8	28.0
September	77.0	78.5	50.9	76.4	38.0	49.8	28.5	42.8	36.5	51.4	21.8	41.0
September quarter 1994	73.2	71.2	48.2	71.4	34.2	42.9	23.7	37.2	31.6	38.5	18.3	31.9
GUEST NIGHTS												
September quarter 1993	413,153	271,455	17,933	702,541	36,915	97,953	11,889	146,757	7,502	31,850	7,601	46,953
1994—												
July	141,251	93,680	5,894	240,825	15,139	33,846	3,983	52,968	2,368	9,652	2,196	14,216
August	144,969	85,025	5,693	235,687	12,925	30,982	3,532	47,439	1,877	9,450	1,825	13,152
September	149,658	97,712	5,891	253,261	15,750	38,568	4,872	59,190	2,613	15,669	2,492	20,774
September quarter 1994	435,878	276,417	17,478	729,773	43,814	103,396	12,387	159,597	6,858	34,771	6,513	48,142
BED OCCUPANCY RATES (per cent)												
September quarter 1993	42.5	44.8	34.4	43.1	20.6	27.5	17.1	24.3	23.0	22.3	15.6	20.9
1994—												
July	43.5	45.3	36.0	44.0	22.1	27.7	17.9	24.9	22.3	19.7	14.4	19.0
August	44.6	41.1	38.7	43.1	18.9	25.3	15.8	22.3	17.7	19.3	12.0	17.6
September	47.5	48.8	41.3	47.8	23.8	32.6	22.6	28.7	25.4	33.1	16.9	28.7
September quarter 1994	45.2	45.0	38.5	44.9	21.6	28.5	18.7	25.3	21.7	24.0	14.4	21.7
GUEST ARRIVALS												
September quarter 1993	164,963	89,280	5,311	259,554	21,066	45,793	6,095	72,954	6,459	20,274	4,162	30,895
1994—												
July	52,086	32,517	1,711	86,314	7,637	16,973	2,003	26,613	1,301	6,116	1,123	8,540
August	53,923	31,273	1,172	86,368	7,499	16,697	1,866	26,062	1,179	6,160	1,201	8,540
September	57,597	33,402	1,418	92,417	8,734	21,646	2,316	32,696	1,590	10,314	1,483	13,387
September quarter 1994	163,606	97,192	4,301	265,099	23,870	55,316	6,185	85,371	4,070	22,590	3,807	30,467
AVERAGE LENGTH OF STAY (days)												
September quarter 1993	2.5	3.0	3.4	2.7	1.8	2.1	2.0	2.0	1.2	1.6	1.8	1.5
September quarter 1994	2.7	2.8	4.1	2.8	1.8	1.9	2.0	1.9	1.7	1.5	1.7	1.6
TAKINGS FROM ACCOMMODATION (\$'000)												
September quarter 1993	24,980	9,276	324	34,580	1,243	2,980	218	4,441	350	978	163	1,492
1994—												
July	9,149	3,382	108	12,639	501	1,110	80	1,691	118	282	43	444
August	9,964	3,242	95	13,301	453	1,058	66	1,577	103	300	36	440
September	10,053	3,669	107	13,829	563	1,284	93	1,940	139	462	57	659
September quarter 1994	29,165	10,294	310	39,769	1,517	3,452	239	5,208	361	1,045	137	1,543

TABLE 6 — HOTELS, MOTELS AND GUEST HOUSES BY STATISTICAL DIVISION,
WESTERN AUSTRALIA (a)—continued

Particulars	Central (SD)				Pilbara (SD) and Kimberley (SD)				Western Australia			
	Establishments with facilities		Estabs. without facilities	Total	Establishments with facilities		Estabs. without facilities	Total	Establishments with facilities		Estabs. without facilities	Total
	Licensed hotels	Motels, etc.			Licensed hotels	Motels, etc.			Licensed hotels	Motels, etc.		
ESTABLISHMENTS, CAPACITY AND EMPLOYMENT												
September quarter 1993—												
Establishments	23	13	16	52	25	12	8	45	160	166	135	461
Guest rooms	760	427	243	1,430	n.p.	824	n.p.	2,631	8,118	6,493	3,109	17,720
Bed spaces	1,839	1,262	466	3,567	n.p.	2,113	n.p.	5,651	19,718	17,960	5,024	42,702
Employment (persons)	348	168	82	598	n.p.	367	n.p.	1,224	6,768	2,533	1,133	10,434
September quarter 1994												
Establishments	23	13	15	51	26	12	11	49	161	173	129	463
Guest rooms	739	429	252	1,420	1,162	828	779	2,769	8,170	6,563	2,990	17,723
Bed spaces	1,815	1,259	520	3,594	2,802	2,144	1,010	5,956	20,062	18,278	4,926	43,266
Employment (persons)	375	167	74	616	769	447	113	1,329	7,011	2,717	999	10,727
ROOM NIGHTS OCCUPIED												
September quarter 1993	35,196	23,827	5,220	64,243	n.p.	51,413	n.p.	134,141	441,769	340,477	81,322	863,568
1994—												
July	12,555	7,935	1,637	22,127	23,859	16,924	5,168	45,951	150,637	111,119	28,109	289,865
August	13,331	7,869	1,904	23,104	24,388	18,179	5,138	47,705	158,125	112,243	28,867	299,235
September	12,182	7,925	1,942	22,049	20,615	15,543	5,197	41,355	158,783	126,992	29,438	315,213
September quarter 1994	38,068	23,729	5,483	67,280	68,862	50,646	15,503	135,011	467,545	350,354	86,414	904,313
ROOM OCCUPANCY RATES (per cent)												
September quarter 1993	50.7	60.7	24.0	49.2	n.p.	67.8	n.p.	55.4	59.2	57.0	28.5	53.0
1994												
July	54.8	59.7	21.1	50.3	66.2	65.9	21.4	53.5	59.7	54.6	30.4	52.9
August	58.2	59.2	24.5	52.6	67.7	70.8	21.3	55.6	62.5	55.2	31.4	54.6
September	54.9	61.6	25.9	51.8	59.1	62.6	22.2	49.8	64.8	64.5	33.1	59.4
September quarter 1994	56.0	60.1	23.8	51.6	64.4	66.5	21.6	53.0	62.3	58.0	31.6	55.6
GUEST NIGHTS												
September quarter 1993	59,057	44,906	7,405	111,368	n.p.	91,968	n.p.	208,267	686,763	612,053	103,023	1,401,839
1994												
July	21,246	15,294	2,420	38,960	37,628	31,564	6,080	75,272	235,220	204,061	35,240	474,521
August	20,986	13,523	2,843	37,352	37,139	30,980	6,148	74,267	236,620	191,203	35,606	463,429
September	18,924	13,905	2,810	35,639	29,947	26,109	5,740	61,796	240,314	221,413	36,637	498,364
September quarter 1994	61,156	42,722	8,073	111,951	104,714	88,653	17,968	211,335	712,154	616,677	107,483	1,436,314
BED OCCUPANCY RATES (per cent)												
September quarter 1993	35.1	38.7	17.8	34.2	n.p.	47.3	n.p.	40.1	37.9	37.0	22.4	35.7
1994—												
July	37.8	39.2	15.1	35.0	43.3	47.5	19.4	40.8	37.9	36.0	23.1	35.4
August	37.3	34.6	17.8	33.6	42.8	46.6	19.6	40.2	38.1	33.7	23.6	34.6
September	34.8	36.8	18.1	33.1	35.6	40.6	18.9	34.6	40.0	40.4	25.1	38.5
September quarter 1994	36.6	36.9	17.0	33.9	40.6	44.9	19.3	38.6	38.7	36.7	24.0	36.2
GUEST ARRIVALS												
September quarter 1993	31,634	31,091	3,667	66,392	n.p.	30,619	n.p.	86,292	313,710	256,066	36,694	606,470
1994—												
July	10,775	10,679	1,196	22,650	17,507	10,156	1,890	29,553	100,023	88,562	12,229	200,814
August	11,352	10,045	1,569	22,966	19,482	10,497	1,538	31,517	105,267	87,499	12,115	204,881
September	10,506	10,625	1,694	22,825	14,085	8,971	1,096	24,152	107,908	103,572	13,148	224,628
September quarter 1994	32,633	31,349	4,459	68,441	51,074	29,624	4,524	85,222	313,198	279,633	37,492	630,323
AVERAGE LENGTH OF STAY (days)												
September quarter 1993	1.9	1.4	2.0	1.7	n.p.	3.0	n.p.	2.4	2.2	2.4	2.8	2.3
September quarter 1994	1.9	1.4	1.8	1.6	2.1	3.0	4.0	2.5	2.3	2.2	2.9	2.3
TAKINGS FROM ACCOMMODATION (\$'000)												
September quarter 1993	1,858	1,417	151	3,426	n.p.	4,511	n.p.	9,556	35,537	21,826	2,457	59,821
1994—												
July	686	498	76	1,261	1,748	1,762	159	3,669	12,889	7,831	945	21,665
August	695	476	89	1,260	1,782	1,769	160	3,711	13,732	7,687	954	22,372
September	686	487	86	1,260	1,485	1,563	166	3,214	13,799	8,542	986	23,327
September quarter 1994	2,068	1,461	251	3,780	5,015	5,094	485	10,594	40,420	24,060	2,885	67,365

(a) From December quarter 1993, establishments with fewer than 5 rooms have been formally excluded from the scope of this collection. See Explanatory Note 2 (page 24).

TABLE 7 — HOTELS, MOTELS AND GUEST HOUSES WITH FACILITIES: STATISTICAL DIVISIONS

Statistical Divisions and selected Statistical Local Areas	Establish- ments	Guest rooms	Bed spaces	Employ- ment (persons)	Room nights occupied			Room occupancy rates (per cent)				
					July	Aug.	Sept.	Sept. qtr	July	Aug.	Sept.	Sept. qtr
Belmont (C)	9	587	1,623	292	14,531	14,503	14,432	43,466	79.9	79.7	82.0	80.5
Cockburn (C) and Fremantle area (a)	6	363	877	394	7,787	8,014	8,008	23,809	69.2	71.2	73.5	71.3
Perth (C)												
Inner (b)	14	1,885	4,058	1,283	39,233	41,835	46,396	127,464	67.1	71.6	82.0	73.5
Remainder (c)	13	1,829	4,548	1,414	44,719	44,725	46,588	136,032	78.9	78.9	84.9	80.8
Total (c)	27	3,714	8,606	2,697	83,952	86,560	92,984	263,496	72.9	75.2	83.5	77.1
Rockingham (C)	4	103	244	90	1,816	2,097	1,875	5,788	56.9	65.7	60.7	61.1
South Perth (C)	6	335	1,019	152	7,009	6,601	7,730	21,340	67.5	63.6	76.9	69.2
Stirling (C) (d)	9	576	1,509	733	7,806	9,799	9,752	27,357	44.6	55.2	56.4	52.1
Wanneroo (C)	5	69	231	130	791	679	942	2,412	37.0	31.7	45.5	38.0
Balance	21	994	3,088	977	19,950	20,113	20,893	60,956	65.6	65.6	70.6	67.3
<i>Perth (SD)</i>	<i>87</i>	<i>6,741</i>	<i>17,197</i>	<i>5,465</i>	<i>143,642</i>	<i>148,366</i>	<i>156,616</i>	<i>448,624</i>	<i>69.0</i>	<i>71.1</i>	<i>77.5</i>	<i>72.5</i>
Augusta-Margaret River (S)	11	238	658	161	3,100	2,798	4,094	9,992	42.0	37.9	57.3	45.6
Bunbury (C)	13	535	1,518	434	6,700	6,853	7,952	21,505	40.4	41.3	49.5	43.7
Busselton (S)	17	544	1,718	271	6,312	6,041	6,824	19,177	37.4	35.8	41.8	38.3
Collie (S)	4	76	180	45	857	1,231	1,198	3,286	36.4	52.2	52.5	47.0
Mandurah (C)	7	241	746	129	3,000	2,760	3,153	8,913	40.2	36.9	43.6	40.2
Manjimup (S)	9	322	903	164	3,117	2,875	4,270	10,262	31.2	28.8	44.2	34.6
Balance	11	171	427	79	1,543	1,272	1,362	4,177	29.1	24.0	26.5	26.6
<i>South West (SD)</i>	<i>72</i>	<i>2,127</i>	<i>6,150</i>	<i>1,283</i>	<i>24,629</i>	<i>23,830</i>	<i>28,853</i>	<i>77,312</i>	<i>37.4</i>	<i>36.1</i>	<i>45.2</i>	<i>39.5</i>
Albany (S) and Albany (T)	11	468	1,306	188	5,088	5,492	8,569	19,149	35.1	37.9	61.0	44.5
Denmark (S)	4	71	191	27	295	382	340	1,017	13.4	17.4	16.0	15.6
Balance	8	178	423	55	1,418	1,381	1,474	4,273	25.7	25.0	27.6	26.1
<i>Lower Great Southern (SD)</i>	<i>23</i>	<i>717</i>	<i>1,920</i>	<i>270</i>	<i>6,801</i>	<i>7,255</i>	<i>10,383</i>	<i>24,439</i>	<i>30.6</i>	<i>32.6</i>	<i>48.3</i>	<i>37.0</i>
Narrogin (T)	3	71	165	33	630	706	589	1,925	28.6	32.1	27.7	29.5
Balance	11	166	375	63	1,420	1,803	2,628	5,851	27.6	35.0	52.8	38.3
<i>Upper Great Southern (SD)</i>	<i>14</i>	<i>237</i>	<i>540</i>	<i>96</i>	<i>2,050</i>	<i>2,509</i>	<i>3,217</i>	<i>7,776</i>	<i>27.9</i>	<i>34.1</i>	<i>45.2</i>	<i>35.7</i>
Dandaragan (S) and Gingin (S)	5	118	332	46	1,249	1,312	1,664	4,225	34.1	35.9	47.0	38.9
Merredin (S)	4	93	230	31	1,160	1,285	1,772	4,217	40.2	44.6	63.5	49.3
Northam (S) and Northam (T)	3	106	263	86	1,239	1,230	1,443	3,912	37.7	37.4	45.4	40.1
York (S)	3	70	180	45	711	748	836	2,295	32.8	34.5	39.8	35.6
Balance	14	192	410	57	1,328	1,679	1,933	4,940	22.3	28.2	33.6	28.0
<i>Midlands (SD)</i>	<i>29</i>	<i>579</i>	<i>1,415</i>	<i>265</i>	<i>5,687</i>	<i>6,254</i>	<i>7,648</i>	<i>19,589</i>	<i>31.7</i>	<i>34.8</i>	<i>44.0</i>	<i>36.8</i>
Dundas (S)	8	199	579	80	2,160	2,578	3,322	8,060	35.0	41.8	55.6	44.0
Esperance (S)	9	273	721	145	3,355	3,460	5,065	11,880	39.6	40.9	61.8	47.3
Kalgoorlie-Boulder (C)	10	530	1,407	297	10,257	10,514	12,182	32,953	62.4	64.0	76.6	67.6
Ravensthorpe (S)	3	48	143	21	508	428	749	1,685	34.1	28.8	52.0	38.2
Balance	5	124	248	48	1,394	1,407	1,475	4,276	36.3	36.6	39.7	37.5
<i>South Eastern (SD)</i>	<i>35</i>	<i>1,174</i>	<i>3,098</i>	<i>591</i>	<i>17,674</i>	<i>18,387</i>	<i>22,793</i>	<i>58,854</i>	<i>48.6</i>	<i>50.5</i>	<i>64.7</i>	<i>54.5</i>
Camarvon (S)	6	267	717	107	5,503	5,085	3,958	14,546	66.5	61.4	49.4	59.2
Geraldton (C) and Greenough (S)	12	411	1,134	218	7,675	8,179	8,800	24,654	60.2	64.2	71.4	65.2
Shark Bay (S)	4	77	185	46	1,353	1,267	1,394	4,014	56.7	53.1	60.3	56.7
Balance	14	413	1,038	171	5,959	6,669	5,955	18,583	46.5	52.1	48.1	48.9
<i>Central (SD)</i>	<i>36</i>	<i>1,168</i>	<i>3,074</i>	<i>542</i>	<i>20,490</i>	<i>21,200</i>	<i>20,107</i>	<i>61,797</i>	<i>56.6</i>	<i>58.6</i>	<i>57.4</i>	<i>57.5</i>
Port Hedland (T)	5	241	677	163	5,853	6,192	5,416	17,461	78.3	82.9	74.9	78.8
Roeboorne (S)	4	222	537	196	4,865	4,764	4,253	13,882	70.7	69.2	63.9	68.0
Balance	9	469	954	146	7,041	7,575	7,021	21,637	48.4	52.1	49.9	50.1
<i>Pilbara (SD)</i>	<i>18</i>	<i>932</i>	<i>2,168</i>	<i>505</i>	<i>17,759</i>	<i>18,531</i>	<i>16,690</i>	<i>52,980</i>	<i>61.5</i>	<i>64.1</i>	<i>59.7</i>	<i>61.8</i>
Broome (S)	6	562	1,584	477	13,946	14,460	12,402	40,808	80.0	83.0	73.6	78.9
Derby-West Kimberley (S)	4	182	450	63	2,672	2,812	2,012	7,496	47.4	49.8	36.8	44.8
Balance	10	314	744	171	6,406	6,764	5,054	18,224	65.8	69.5	53.7	63.1
<i>Kimberley (SD)</i>	<i>20</i>	<i>1,058</i>	<i>2,778</i>	<i>711</i>	<i>23,024</i>	<i>24,036</i>	<i>19,468</i>	<i>66,528</i>	<i>70.2</i>	<i>73.3</i>	<i>61.3</i>	<i>68.3</i>
<i>Western Australia</i>	<i>334</i>	<i>14,733</i>	<i>38,340</i>	<i>9,728</i>	<i>261,756</i>	<i>270,368</i>	<i>285,775</i>	<i>817,899</i>	<i>57.4</i>	<i>59.2</i>	<i>64.7</i>	<i>60.4</i>

(a) The Fremantle area comprises the City of Fremantle (see paragraph 22 of Explanatory Notes) and the Town of East Fremantle. Cockburn (C) includes Rottnest Island.
(b) Bounded by (clockwise) Victoria Avenue, Riverside Drive, Mitchell Freeway, the railway line and Lord Street. (c) With effect from 1 July 1994, the area of Perth City has been reduced with the creation of the new towns of Cambridge, Shepperton and Vincent. (d) See paragraph 22 of Explanatory Notes.

AND SELECTED STATISTICAL LOCAL AREAS, WESTERN AUSTRALIA, SEPTEMBER QUARTER 1994

<i>Guest nights</i>				<i>Guest arrivals</i>				<i>Takings from accommodation (\$ '000)</i>			
<i>July</i>	<i>Aug.</i>	<i>Sept.</i>	<i>Sept. qtr</i>	<i>July</i>	<i>Aug.</i>	<i>Sept.</i>	<i>Sept. qtr</i>	<i>July</i>	<i>Aug.</i>	<i>Sept.</i>	<i>Sept. qtr</i>
28,209	25,192	25,133	78,534	12,189	12,403	11,681	36,273	847	807	771	2,424
12,794	11,792	12,557	37,143	4,083	4,109	4,298	12,490	781	771	799	2,351
61,247	62,707	68,899	192,853	22,499	22,394	24,236	69,129	3,261	3,410	3,775	10,446
67,822	66,760	71,954	206,536	23,779	25,069	26,658	75,506	4,115	4,369	4,436	12,920
129,069	129,467	140,853	399,389	46,278	47,463	50,894	144,635	7,376	7,779	8,211	23,366
2,535	3,062	2,660	8,257	555	775	766	2,096	91	105	93	290
12,837	11,091	12,782	36,710	4,763	4,173	4,974	13,910	436	405	481	1,321
14,647	16,744	17,777	49,168	4,156	4,286	4,263	12,705	758	984	896	2,638
1,538	1,309	1,812	4,659	915	936	1,291	3,142	62	53	69	184
33,302	31,337	33,796	98,435	11,664	11,051	12,832	35,547	2,180	2,301	2,403	6,885
234,931	229,994	247,370	712,295	84,603	85,196	90,999	260,798	12,531	13,206	13,722	39,459
6,111	5,363	7,824	19,298	4,378	4,070	6,280	14,728	208	183	253	644
11,005	10,411	12,629	34,045	5,998	6,231	7,399	19,628	415	412	481	1,308
14,191	12,804	14,557	41,552	6,127	5,715	6,694	18,536	434	402	464	1,301
1,145	1,715	1,673	4,533	604	971	974	2,549	43	57	53	154
7,373	5,941	6,673	19,987	2,112	1,998	1,967	6,077	209	184	213	605
6,777	5,912	8,954	21,643	3,624	3,870	5,489	12,983	221	210	314	744
2,383	1,761	2,008	6,152	1,767	1,341	1,577	4,685	82	63	68	213
48,985	43,907	54,318	147,210	24,610	24,196	30,380	79,186	1,611	1,511	1,847	4,969
9,482	8,956	15,517	33,955	5,773	5,746	10,006	21,525	323	322	514	1,160
460	508	491	1,459	277	255	343	875	19	23	20	61
2,078	1,863	2,274	6,215	1,367	1,338	1,555	4,260	59	59	67	185
12,020	11,327	18,282	41,629	7,417	7,339	11,904	26,660	401	404	601	1,406
748	803	675	2,226	560	661	565	1,786	30	34	31	95
2,248	2,798	4,509	9,555	1,878	2,195	3,793	7,866	65	83	130	278
2,996	3,601	5,184	11,781	2,438	2,856	4,358	9,652	95	117	161	373
2,027	2,187	2,779	6,993	1,409	1,682	2,244	5,335	63	67	84	214
1,534	1,846	2,429	5,809	975	1,112	1,703	3,790	47	57	65	169
1,891	1,927	2,069	5,887	1,366	1,515	1,427	4,308	78	74	85	237
1,335	1,291	1,417	4,043	1,143	833	1,204	3,180	52	61	65	178
1,775	2,460	3,173	7,408	1,250	1,786	2,418	5,454	62	78	90	230
8,562	9,711	11,867	30,140	6,143	6,928	8,996	22,067	302	338	388	1,029
4,196	4,760	6,522	15,478	3,861	4,275	6,189	14,325	129	145	203	476
5,072	5,305	8,569	18,946	2,426	2,592	4,779	9,797	163	170	268	601
14,292	14,378	17,740	46,410	6,393	6,501	7,683	20,577	695	700	816	2,211
835	612	1,180	2,627	582	458	871	1,911	19	15	27	61
1,660	1,600	1,810	5,070	995	1,049	1,134	3,178	80	92	86	258
26,055	26,655	35,821	88,531	14,257	14,875	20,656	49,788	1,085	1,121	1,400	3,606
9,230	8,194	6,092	23,516	5,919	5,914	3,911	15,744	302	277	217	796
14,033	13,225	14,789	42,047	8,570	8,124	9,605	26,299	437	440	487	1,364
2,414	2,125	2,316	6,855	1,615	1,903	1,835	5,353	104	95	115	314
10,863	10,965	9,632	31,460	5,350	5,456	5,780	16,586	341	359	354	1,055
36,540	34,509	32,829	103,878	21,454	21,397	21,131	63,982	1,184	1,171	1,173	3,529
8,318	7,881	6,769	22,968	3,557	4,257	2,861	10,675	411	414	357	1,181
6,706	6,368	5,396	18,470	2,919	3,467	2,716	9,102	359	357	317	1,032
9,225	9,775	9,156	28,156	3,846	4,199	3,727	11,772	470	561	514	1,546
24,249	24,024	21,321	69,594	10,322	11,923	9,304	31,549	1,239	1,331	1,188	3,758
29,699	28,510	23,562	81,771	7,858	7,984	6,728	22,570	1,595	1,502	1,323	4,420
4,336	4,473	3,015	11,824	2,832	3,243	2,242	8,317	179	195	141	514
10,908	11,112	8,158	30,178	6,651	6,829	4,782	18,262	497	523	397	1,417
44,943	44,095	34,735	123,773	17,341	18,056	13,752	49,149	2,271	2,219	1,861	6,351
439,281	427,823	461,727	1,328,831	188,585	192,766	211,480	592,831	20,720	21,419	22,341	64,480

TABLE 8 — HOLIDAY FLATS, UNITS AND HOUSES BY STATISTICAL DIVISION, WESTERN AUSTRALIA

Particulars	Perth (SD)	South-West (SD)	Lower Great	Upper Great	Midlands (SD)	South-	Central (SD)	Pilbara and	Western Australia
			Southern (SD)	Southern (SD)		Eastern (SD)		Kimberley (SDs)	
LETTING ENTITIES, CAPACITY AND EMPLOYMENT									
<i>September quarter 1993—</i>									
Letting entities	30	27	12	--	7	4	25	1	106
Flats, units and houses									
Single bedroom	398	32	20	—	12	n.p.	42	n.p.	527
Multiple bedroom	684	295	94	—	50	n.p.	424	n.p.	1,570
<i>Total flats, units and houses</i>	<i>1,082</i>	<i>327</i>	<i>114</i>	<i>—</i>	<i>62</i>	<i>n.p.</i>	<i>466</i>	<i>n.p.</i>	<i>2,097</i>
Bed spaces	4,386	1,995	605	—	307	n.p.	2,363	n.p.	9,874
Employment (persons) (a)	204	105	27	—	11	n.p.	78	n.p.	440
<i>September quarter 1994—</i>									
Letting entities	29	27	12	—	7	5	24	2	106
Flats, units and houses									
Single bedroom	390	32	20	—	14	n.p.	50	n.p.	573
Multiple bedroom	748	307	98	—	48	n.p.	418	n.p.	1,682
<i>Total flats, units and houses</i>	<i>1,138</i>	<i>339</i>	<i>118</i>	<i>—</i>	<i>62</i>	<i>n.p.</i>	<i>468</i>	<i>n.p.</i>	<i>2,255</i>
Bed spaces	4,746	2,081	627	—	302	n.p.	2,477	n.p.	10,712
Employment (persons) (a)	237	119	33	—	12	n.p.	75	n.p.	502
UNIT NIGHTS OCCUPIED									
<i>September quarter 1993</i>	<i>55,571</i>	<i>11,507</i>	<i>3,198</i>	<i>—</i>	<i>1,123</i>	<i>n.p.</i>	<i>23,809</i>	<i>n.p.</i>	<i>96,779</i>
<i>1994—</i>									
July	21,331	5,428	1,248	—	316	n.p.	9,608	n.p.	40,163
August	19,747	3,237	805	—	275	n.p.	8,514	n.p.	34,757
September	21,704	4,235	1,341	—	485	n.p.	8,686	n.p.	39,092
<i>September quarter 1994</i>	<i>62,782</i>	<i>12,900</i>	<i>3,394</i>	<i>—</i>	<i>1,076</i>	<i>n.p.</i>	<i>26,808</i>	<i>n.p.</i>	<i>114,012</i>
UNIT OCCUPANCY RATES (per cent)									
<i>September quarter 1993</i>	<i>55.8</i>	<i>38.2</i>	<i>30.5</i>	<i>—</i>	<i>19.7</i>	<i>n.p.</i>	<i>55.5</i>	<i>n.p.</i>	<i>50.2</i>
<i>1994</i>									
July	60.5	51.7	34.1	—	16.4	n.p.	66.2	n.p.	57.5
August	56.0	30.8	22.0	—	14.3	n.p.	58.7	n.p.	49.7
September	63.6	41.6	37.9	—	26.1	n.p.	61.9	n.p.	57.8
<i>September quarter 1994</i>	<i>60.0</i>	<i>41.4</i>	<i>31.3</i>	<i>—</i>	<i>18.9</i>	<i>n.p.</i>	<i>62.3</i>	<i>n.p.</i>	<i>55.0</i>
UNIT LETTINGS									
<i>September quarter 1993</i>	<i>9,843</i>	<i>4,355</i>	<i>1,171</i>	<i>—</i>	<i>465</i>	<i>n.p.</i>	<i>6,152</i>	<i>n.p.</i>	<i>22,585</i>
<i>1994—</i>									
July	3,723	1,881	486	—	140	n.p.	2,073	n.p.	8,690
August	3,492	1,349	291	—	134	n.p.	2,059	n.p.	7,754
September	4,368	1,760	512	—	233	n.p.	2,310	n.p.	9,746
<i>September quarter 1994</i>	<i>11,583</i>	<i>4,990</i>	<i>1,289</i>	<i>—</i>	<i>507</i>	<i>n.p.</i>	<i>6,442</i>	<i>n.p.</i>	<i>26,190</i>
AVERAGE LENGTH OF STAY (days)									
<i>September quarter 1993</i>	<i>5.6</i>	<i>2.6</i>	<i>2.7</i>	<i>—</i>	<i>2.4</i>	<i>n.p.</i>	<i>3.9</i>	<i>n.p.</i>	<i>4.3</i>
<i>1994</i>									
July	5.7	2.9	2.6	—	2.3	n.p.	4.6	n.p.	4.6
August	5.7	2.4	2.8	—	2.1	n.p.	4.1	n.p.	4.5
September	5.0	2.4	2.6	—	2.1	n.p.	3.8	n.p.	4.0
<i>September quarter 1994</i>	<i>5.4</i>	<i>2.6</i>	<i>2.6</i>	<i>—</i>	<i>2.1</i>	<i>n.p.</i>	<i>4.2</i>	<i>n.p.</i>	<i>4.4</i>
TAKINGS FROM ACCOMMODATION (\$'000)									
<i>September quarter 1993</i>	<i>3,005</i>	<i>678</i>	<i>171</i>	<i>—</i>	<i>46</i>	<i>n.p.</i>	<i>1,176</i>	<i>n.p.</i>	<i>5,153</i>
<i>1994—</i>									
July	1,293	322	74	—	13	n.p.	534	n.p.	2,386
August	1,201	222	45	—	12	n.p.	425	n.p.	2,066
September	1,460	269	73	—	18	n.p.	456	n.p.	2,456
<i>September quarter 1994</i>	<i>3,954</i>	<i>813</i>	<i>192</i>	<i>—</i>	<i>43</i>	<i>n.p.</i>	<i>1,415</i>	<i>n.p.</i>	<i>6,908</i>

(a) Employment numbers exclude real estate agents and their employees.

TABLE 9 — HOLIDAY FLATS, UNITS AND HOUSES BY SELECTED STATISTICAL LOCAL AREAS,
WESTERN AUSTRALIA

Particulars	Rottnest Island (a)	Belmont (C)	Perth (C) (b) (c)	Stirling (C) (c)	Albany (S) and Albany (T)	Augusta- Margaret River (S)	Busselton (S)	Gingin (S)	Northampton (S)
LETTING ENTITIES, CAPACITY AND EMPLOYMENT									
<i>September quarter 1993—</i>									
Letting entities	1	4	5	5	7	6	9	4	12
Flats, units and houses									
Single bedroom	15	51	204	21	5	2	20	12	6
Multiple bedroom	232	61	4	54	63	38	117	18	276
<i>Total flats, units and houses</i>	<i>247</i>	<i>112</i>	<i>208</i>	<i>75</i>	<i>68</i>	<i>40</i>	<i>137</i>	<i>30</i>	<i>282</i>
Bed spaces	1,180	431	669	330	346	218	701	135	1,554
Employment (persons) (d)	87	14	24	14	17	19	48	7	53
<i>September quarter 1994</i>									
Letting entities	1	4	4	5	7	6	9	4	12
Flats, units and houses									
Single bedroom	15	64	182	22	5	2	20	13	7
Multiple bedroom	232	63	4	106	67	38	134	17	269
<i>Total flats, units and houses</i>	<i>247</i>	<i>127</i>	<i>186</i>	<i>128</i>	<i>72</i>	<i>40</i>	<i>154</i>	<i>30</i>	<i>276</i>
Bed spaces	1,180	462	576	575	370	216	798	134	1,536
Employment (persons) (d)	99	19	23	28	23	18	62	7	48
UNIT NIGHTS OCCUPIED									
<i>September quarter 1993</i>	<i>12,261</i>	<i>6,049</i>	<i>11,009</i>	<i>3,469</i>	<i>2,447</i>	<i>1,930</i>	<i>4,376</i>	<i>424</i>	<i>13,870</i>
<i>1994—</i>									
July	4,854	2,685	3,191	2,251	905	902	2,317	105	5,167
August	3,163	2,752	3,647	2,014	483	597	1,499	109	4,461
September	3,811	2,822	4,046	2,637	977	779	1,816	134	5,136
<i>September quarter 1994</i>	<i>11,828</i>	<i>8,259</i>	<i>10,884</i>	<i>6,902</i>	<i>2,365</i>	<i>2,278</i>	<i>5,632</i>	<i>348</i>	<i>14,764</i>
UNIT OCCUPANCY RATES (per cent)									
<i>September quarter 1993</i>	<i>54.0</i>	<i>58.7</i>	<i>57.5</i>	<i>50.3</i>	<i>39.1</i>	<i>52.4</i>	<i>34.7</i>	<i>15.4</i>	<i>53.5</i>
<i>1994</i>									
July	63.4	68.2	55.3	56.7	40.5	72.7	48.5	11.3	60.4
August	41.3	69.9	63.3	50.8	21.6	48.1	31.4	11.7	52.1
September	51.4	74.1	72.5	68.7	45.2	64.9	39.3	14.9	62.0
<i>September quarter 1994</i>	<i>52.1</i>	<i>70.7</i>	<i>63.6</i>	<i>58.6</i>	<i>35.7</i>	<i>61.9</i>	<i>39.8</i>	<i>12.6</i>	<i>58.1</i>
UNIT LETTINGS									
<i>September quarter 1993</i>	<i>2,069</i>	<i>1,375</i>	<i>2,262</i>	<i>623</i>	<i>899</i>	<i>854</i>	<i>1,627</i>	<i>148</i>	<i>3,839</i>
<i>1994—</i>									
July	772	562	789	400	345	368	796	40	1,113
August	560	590	782	423	210	292	609	47	1,133
September	859	746	941	531	410	391	740	70	1,332
<i>September quarter 1994</i>	<i>2,191</i>	<i>1,898</i>	<i>2,512</i>	<i>1,354</i>	<i>965</i>	<i>1,051</i>	<i>2,145</i>	<i>157</i>	<i>3,578</i>
AVERAGE LENGTH OF STAY (days)									
<i>September quarter 1993</i>	<i>5.9</i>	<i>4.4</i>	<i>4.9</i>	<i>5.6</i>	<i>2.7</i>	<i>2.3</i>	<i>2.7</i>	<i>2.9</i>	<i>3.6</i>
<i>1994—</i>									
July	6.3	4.8	4.0	5.6	2.6	2.5	2.9	2.6	4.6
August	5.6	4.7	4.7	4.8	2.3	2.0	2.5	2.3	3.9
September	4.4	3.8	4.3	5.0	2.4	2.0	2.5	1.9	3.9
<i>September quarter 1994</i>	<i>5.4</i>	<i>4.4</i>	<i>4.3</i>	<i>5.1</i>	<i>2.5</i>	<i>2.2</i>	<i>2.6</i>	<i>2.2</i>	<i>4.1</i>
TAKINGS FROM ACCOMMODATION (\$'000)									
<i>September quarter 1993</i>	<i>478</i>	<i>263</i>	<i>490</i>	<i>203</i>	<i>142</i>	<i>108</i>	<i>269</i>	<i>20</i>	<i>709</i>
<i>1994—</i>									
July	221	112	141	173	58	54	156	5	314
August	117	101	178	186	36	28	106	4	226
September	213	110	206	261	63	41	125	5	274
<i>September quarter 1994</i>	<i>551</i>	<i>322</i>	<i>526</i>	<i>619</i>	<i>156</i>	<i>124</i>	<i>388</i>	<i>15</i>	<i>815</i>

(a) Unincorporated area. (b) With effect from 1 July 1994, the area of Perth City has been reduced with the creation of the new towns of Cambridge, Shepperton and Vincent.
(c) See paragraph 22 of Explanatory Notes. (d) Employment numbers exclude real estate agents and their employees.

TABLE 10—CARAVAN PARKS: STATISTICAL DIVISIONS AND SELECTED

Statistical Divisions and Selected Statistical Local Areas	Capacity					Total	Sites occupied by long-term guests	Other sites permanently reserved	Employment (persons)
	Establishments	On-site vans	Other powered sites	Unpowered sites	Cabins, flats, etc.				
Armadale (C)	3	35	203	12	4	254	113	—	10
Cockburn (C)	4	12	479	198	66	755	312	5	25
Kalamunda (S)	3	50	249	40	21	360	172	3	13
Rockingham (C)	4	25	458	43	—	526	252	68	14
Stirling (C) (a)	3	33	188	44	22	287	137	—	11
Swan (S)	4	98	440	73	27	638	259	3	24
Wanneroo (C)	7	107	524	67	7	705	375	35	32
Balance	6	69	371	31	56	527	183	3	23
<i>Perth (SD)</i>	<i>34</i>	<i>429</i>	<i>2,912</i>	<i>508</i>	<i>203</i>	<i>4,052</i>	<i>1,803</i>	<i>117</i>	<i>152</i>
Augusta-Margaret River (S)	10	92	705	389	14	1,200	37	82	24
Bunbury (C)	3	49	314	94	40	497	127	13	16
Busselton (S)	16	121	1,401	237	176	1,935	162	377	84
Harvey (S)	7	37	297	113	28	475	34	121	13
Mandurah (C)	9	76	864	93	27	1,060	190	436	45
Manjimup (S)	8	70	330	148	23	571	30	4	27
Murray (S)	7	46	502	61	27	636	154	278	26
Waroona (S)	4	20	172	230	14	436	13	31	10
Balance	10	86	309	136	17	548	96	18	20
<i>South West (SD)</i>	<i>74</i>	<i>597</i>	<i>4,894</i>	<i>1,501</i>	<i>366</i>	<i>7,358</i>	<i>843</i>	<i>1,360</i>	<i>265</i>
Albany (S) and Albany (T)	12	125	835	506	62	1,528	143	109	46
Denmark (S)	4	34	263	164	22	483	12	14	12
Balance	10	64	408	208	19	699	44	78	26
<i>Lower Great Southern (SD)</i>	<i>26</i>	<i>223</i>	<i>1,506</i>	<i>878</i>	<i>103</i>	<i>2,710</i>	<i>199</i>	<i>201</i>	<i>84</i>
<i>Upper Great Southern (SD)</i>	<i>17</i>	<i>13</i>	<i>304</i>	<i>166</i>	<i>12</i>	<i>495</i>	<i>23</i>	<i>—</i>	<i>27</i>
Gingin (S)	6	20	380	116	10	526	2	173	18
Balance	33	87	775	350	17	1,229	125	99	57
<i>Midlands (SD)</i>	<i>39</i>	<i>107</i>	<i>1,155</i>	<i>466</i>	<i>27</i>	<i>1,755</i>	<i>127</i>	<i>272</i>	<i>75</i>
Esperance (S)	7	60	460	70	29	619	85	76	26
Kalgoorlie-Boulder (C)	7	84	454	119	161	818	542	7	33
Balance	13	42	594	292	20	948	220	44	29
<i>South Eastern (SD)</i>	<i>27</i>	<i>186</i>	<i>1,508</i>	<i>481</i>	<i>210</i>	<i>2,385</i>	<i>847</i>	<i>127</i>	<i>88</i>
Carnarvon (S)	9	89	905	127	48	1,169	122	7	39
Exmouth (S)	4	48	667	51	38	804	32	6	25
Geraldton (C) and Greenough (S)	7	126	705	206	63	1,100	198	17	41
Irwin (S)	5	39	225	20	41	325	18	27	13
Northampton (S)	7	61	442	234	47	784	27	20	29
Shark Bay (S)	5	29	350	29	77	485	21	2	63
Balance	16	36	469	283	29	817	79	78	29
<i>Central (SD)</i>	<i>53</i>	<i>428</i>	<i>3,763</i>	<i>950</i>	<i>343</i>	<i>5,484</i>	<i>497</i>	<i>157</i>	<i>239</i>
Ashburton (S)	6	35	285	155	22	497	46	4	19
East Pilbara (S)	5	27	260	128	59	474	74	8	25
Port Hedland (T)	3	67	482	55	18	622	154	2	19
Roeboorne (S)	7	55	652	62	21	790	125	2	37
<i>Pilbara (SD)</i>	<i>21</i>	<i>184</i>	<i>1,679</i>	<i>400</i>	<i>120</i>	<i>2,383</i>	<i>399</i>	<i>16</i>	<i>100</i>
Broome (S)	7	61	861	196	27	1,145	136	1	41
Wyndham — East Kimberley (S)	7	20	511	276	11	818	147	—	30
Balance	7	21	351	384	12	768	52	—	25
<i>Kimberley (SD)</i>	<i>21</i>	<i>102</i>	<i>1,723</i>	<i>856</i>	<i>50</i>	<i>2,731</i>	<i>335</i>	<i>1</i>	<i>96</i>
<i>Western Australia</i>									
Short-term parks	205	1,126	12,206	4,243	870	18,445	1,275	2,068	731
Long-term parks	107	1,143	7,238	1,963	564	10,908	3,798	183	395
Total	312	2,269	19,444	6,206	1,434	29,353	5,073	2,251	1,126

(a) See paragraph 22 of Explanatory Notes.

STATISTICAL LOCAL AREAS, WESTERN AUSTRALIA, SEPTEMBER QUARTER 1994

Site nights occupied				Site occupancy rates (per cent)				Guest arrivals				Takings from accommodation (\$'000)			
July	Aug.	Sept.	Sept. qtr	July	Aug.	Sept.	Sept. qtr	July	Aug.	Sept.	Sept. qtr	July	Aug.	Sept.	Sept. qtr
4,287	4,407	3,555	12,249	54.4	56.0	46.7	52.4	105	132	160	397	52	44	47	143
11,665	11,231	11,748	34,644	49.8	48.0	51.9	49.9	946	840	1,109	2,895	150	157	179	486
6,562	7,052	6,750	20,364	58.8	63.2	62.5	61.5	164	163	165	492	55	59	58	172
10,623	10,040	10,629	31,292	65.1	61.6	67.4	64.7	52	71	63	186	73	73	69	216
5,273	5,604	6,121	16,998	59.3	63.0	71.1	64.4	502	448	730	1,680	74	77	93	243
10,264	11,196	12,250	33,710	51.9	56.6	64.0	57.4	804	1,269	1,721	3,794	152	187	200	540
14,218	13,491	13,322	41,031	65.1	61.7	63.0	63.3	572	475	763	1,810	144	144	148	436
8,636	8,352	8,801	25,789	52.9	51.1	55.7	53.2	508	512	587	1,607	99	97	107	303
71,528	71,373	73,176	216,077	56.9	56.8	60.2	58.0	3,653	3,910	5,298	12,861	799	838	901	2,538
5,571	5,582	6,885	18,038	15.0	15.0	19.1	16.3	2,640	2,595	4,007	9,242	54	37	60	150
5,482	5,575	5,521	16,578	35.6	36.2	37.0	36.3	674	752	1,385	2,811	69	67	78	214
19,663	19,514	21,512	60,689	32.8	32.5	37.1	34.1	3,514	3,112	4,768	11,394	236	165	200	602
6,497	6,609	6,641	19,747	44.1	44.9	46.6	45.2	199	215	366	780	28	30	28	86
20,241	20,456	20,701	61,398	61.6	62.3	65.1	63.0	773	815	1,402	2,990	136	116	117	370
1,955	2,536	3,802	8,293	11.0	14.3	22.2	15.8	1,305	1,883	3,150	6,338	26	34	47	107
13,939	13,795	13,513	41,247	70.7	70.0	70.8	70.5	324	202	323	849	112	89	81	283
1,765	1,668	1,743	5,176	13.1	12.3	13.3	12.9	568	226	352	1,146	17	10	13	41
4,978	4,580	4,973	14,531	29.3	27.0	30.2	28.8	587	749	1,514	2,850	41	41	47	128
80,091	80,315	85,291	245,697	35.1	35.2	38.6	36.3	10,584	10,549	17,267	38,400	719	589	672	1,980
10,809	11,577	14,538	36,924	22.8	24.4	31.7	26.3	2,337	2,552	5,090	9,979	114	119	170	403
1,213	924	1,274	3,411	8.1	6.2	8.8	7.7	705	460	881	2,046	12	7	16	35
5,049	5,055	5,444	15,548	23.3	23.3	26.0	24.2	1,390	1,299	2,360	5,049	63	62	73	197
17,071	17,556	21,256	55,883	20.3	20.9	26.1	22.4	4,432	4,311	8,331	17,074	189	187	259	635
2,090	2,223	3,003	7,316	13.6	14.5	20.2	16.1	1,431	1,717	2,726	5,874	27	24	36	87
6,072	5,928	6,123	18,123	37.2	36.4	38.8	37.5	894	713	1,322	2,929	101	24	36	162
10,198	11,872	12,826	34,896	26.8	31.2	34.8	30.9	5,257	4,750	5,791	15,798	89	106	128	322
16,270	17,800	18,949	53,019	29.9	32.7	36.0	32.8	6,151	5,463	7,113	18,727	190	130	164	484
6,390	7,261	8,911	22,562	33.3	37.8	48.0	39.6	1,490	2,144	4,223	7,857	71	83	129	283
19,278	20,231	20,084	59,593	76.0	79.8	81.8	79.2	2,350	3,054	3,362	8,766	279	264	293	836
9,511	9,914	10,174	29,599	32.4	33.7	35.8	33.9	2,246	2,822	3,368	8,436	101	106	107	314
35,179	37,406	39,169	111,754	47.6	50.6	54.7	50.9	6,086	8,020	10,953	25,059	452	453	529	1,433
29,837	29,805	18,410	78,052	82.3	82.2	52.5	72.6	14,989	13,874	9,843	38,706	407	381	239	1,027
17,210	14,659	6,182	38,051	69.0	58.8	25.6	51.4	5,279	5,136	2,533	12,948	250	218	102	570
12,257	13,472	13,451	39,180	35.9	39.5	40.8	38.7	7,084	6,889	6,889	20,862	147	165	170	483
3,358	3,847	4,443	11,648	33.3	38.2	45.6	39.0	1,935	2,367	2,755	7,057	33	42	54	130
8,024	10,703	9,949	28,676	33.0	44.0	42.3	39.8	5,459	5,518	5,109	16,086	105	107	109	321
10,555	9,763	8,150	28,468	70.2	64.9	56.0	63.8	10,314	8,442	7,481	26,237	291	238	225	754
7,104	7,785	7,810	22,699	28.0	30.7	31.9	30.2	3,079	3,824	3,686	10,589	58	69	72	200
88,345	90,034	68,395	246,774	52.0	53.0	41.6	48.9	48,139	46,050	38,296	132,485	1,292	1,220	972	3,484
8,056	8,061	4,336	20,453	52.3	52.3	29.1	44.7	4,673	4,793	2,614	12,080	77	85	46	209
3,888	3,902	3,180	10,970	26.5	26.6	22.4	25.2	2,454	1,969	1,217	5,640	52	56	47	156
10,132	10,125	7,722	27,979	52.5	52.5	41.4	48.9	3,893	4,194	2,219	10,306	142	159	115	416
10,703	11,031	8,072	29,806	43.7	45.0	34.1	41.0	6,430	6,130	3,772	16,332	164	163	114	442
32,779	33,119	23,310	89,208	44.4	44.8	32.6	40.7	17,450	17,086	9,822	44,358	436	464	323	1,223
32,061	31,059	20,033	83,153	90.3	87.5	58.3	78.9	9,391	8,166	6,092	23,649	437	441	259	1,137
19,940	16,722	11,369	48,031	78.6	65.9	46.3	63.8	11,012	9,358	5,263	25,633	222	189	126	538
10,916	9,672	4,328	24,916	45.9	40.6	18.8	35.3	12,554	12,421	6,133	31,108	174	155	73	402
62,917	57,453	35,730	156,100	74.3	67.9	43.6	62.1	32,957	29,945	17,488	80,390	833	785	458	2,076
236,496	234,696	202,380	673,572	41.4	41.0	36.6	39.7	100,359	95,493	88,857	284,709	2,888	2,566	2,229	7,684
169,774	172,583	165,899	508,256	50.2	51.0	50.7	50.6	30,524	31,558	28,437	90,519	2,047	2,125	2,084	6,256
406,270	407,279	368,279	1,181,828	44.6	44.8	41.8	43.8	130,883	127,051	117,294	375,228	4,936	4,691	4,313	13,940

TABLE 11 — CARAVAN PARKS BY STATISTICAL DIVISION, WESTERN AUSTRALIA

Particulars	Perth (SD)			South-West (SD)			Lower Great Southern (SD)		
	Short-term	Long-term	Total	Short-term	Long-term	Total	Short-term	Long-term	Total
ESTABLISHMENTS, CAPACITY AND EMPLOYMENT									
<i>September quarter 1993—</i>									
Establishments	6	29	35	56	18	74	17	10	27
Capacity									
On-site vans	79	363	442	429	178	607	117	109	226
Other powered sites	334	2,504	2,838	3,836	997	4,833	1,160	435	1,595
Unpowered sites	114	402	516	1,054	304	1,358	419	246	665
Cabins, flats, etc.	21	149	170	250	84	334	68	30	98
<i>Total capacity</i>	<i>548</i>	<i>3,418</i>	<i>3,966</i>	<i>5,569</i>	<i>1,563</i>	<i>7,132</i>	<i>1,764</i>	<i>820</i>	<i>2,584</i>
Sites occupied by long-term guests	103	1,592	1,695	418	444	862	68	155	223
Other sites permanently reserved	128	47	175	1,102	144	1,246	156	42	198
Employment (persons)	15	124	139	198	57	255	49	30	79
<i>September quarter 1994</i>									
Establishments	4	30	34	59	15	74	20	6	26
Capacity									
On-site vans	24	405	429	394	203	597	160	63	223
Other powered sites	222	2,690	2,912	4,111	783	4,894	1,175	331	1,506
Unpowered sites	64	444	508	1,240	261	1,501	641	237	878
Cabins, flats, etc.	16	187	203	298	68	366	81	22	103
<i>Total capacity</i>	<i>326</i>	<i>3,726</i>	<i>4,052</i>	<i>6,043</i>	<i>1,315</i>	<i>7,358</i>	<i>2,057</i>	<i>653</i>	<i>2,710</i>
Sites occupied by long-term guests	43	1,760	1,803	475	368	843	98	101	199
Other sites permanently reserved	71	46	117	1,310	50	1,360	161	40	201
Employment (persons)	12	140	152	216	49	265	62	22	84
SITE NIGHTS OCCUPIED									
<i>September quarter 1993</i>	<i>26,088</i>	<i>184,230</i>	<i>210,318</i>	<i>169,807</i>	<i>61,333</i>	<i>231,140</i>	<i>32,113</i>	<i>23,261</i>	<i>55,374</i>
<i>1994—</i>									
July	4,162	67,366	71,528	64,063	16,028	80,091	11,560	5,511	17,071
August	4,081	67,292	71,373	64,436	15,879	80,315	11,869	5,687	17,556
September	4,072	69,104	73,176	69,222	16,069	85,291	15,100	6,156	21,256
<i>September quarter 1994</i>	<i>12,315</i>	<i>203,762</i>	<i>216,077</i>	<i>197,721</i>	<i>47,976</i>	<i>245,697</i>	<i>38,529</i>	<i>17,354</i>	<i>55,883</i>
SITE OCCUPANCY RATES (per cent)									
<i>September quarter 1993</i>	<i>51.7</i>	<i>58.6</i>	<i>57.6</i>	<i>33.5</i>	<i>42.7</i>	<i>35.6</i>	<i>19.8</i>	<i>30.8</i>	<i>23.3</i>
<i>1994—</i>									
July	41.2	58.3	56.9	34.2	39.3	35.1	18.1	27.2	20.3
August	40.4	58.3	56.8	34.4	39.0	35.2	18.6	28.1	20.9
September	41.6	61.8	60.2	38.2	40.7	38.6	24.5	31.4	26.1
<i>September quarter 1994</i>	<i>41.1</i>	<i>59.4</i>	<i>58.0</i>	<i>35.6</i>	<i>39.7</i>	<i>36.3</i>	<i>20.4</i>	<i>28.9</i>	<i>22.4</i>
GUEST ARRIVALS									
<i>September quarter 1993</i>	<i>826</i>	<i>8,768</i>	<i>9,594</i>	<i>32,173</i>	<i>5,619</i>	<i>37,792</i>	<i>10,131</i>	<i>3,811</i>	<i>13,942</i>
<i>1994—</i>									
July	243	3,410	3,653	8,965	1,619	10,584	3,866	566	4,432
August	182	3,728	3,910	8,875	1,674	10,549	3,651	660	4,311
September	362	4,936	5,298	14,595	2,672	17,267	7,101	1,230	8,331
<i>September quarter 1994</i>	<i>787</i>	<i>12,074</i>	<i>12,861</i>	<i>32,435</i>	<i>5,965</i>	<i>38,400</i>	<i>14,618</i>	<i>2,456</i>	<i>17,074</i>
TAKINGS FROM ACCOMMODATION (\$'000)									
<i>September quarter 1993</i>	<i>163</i>	<i>2,010</i>	<i>2,173</i>	<i>1,294</i>	<i>554</i>	<i>1,848</i>	<i>388</i>	<i>186</i>	<i>574</i>
<i>1994—</i>									
July	29	770	799	550	169	719	139	50	189
August	32	805	838	417	173	589	140	47	187
September	27	874	901	494	178	672	204	55	259
<i>September quarter 1994</i>	<i>89</i>	<i>2,449</i>	<i>2,538</i>	<i>1,461</i>	<i>519</i>	<i>1,980</i>	<i>484</i>	<i>151</i>	<i>635</i>

TABLE 11 — CARAVAN PARKS BY STATISTICAL DIVISION, WESTERN AUSTRALIA—continued

Particulars	Upper Great Southern (SD)			Midlands (SD)			South-Eastern (SD)		
	Short-term	Long-term	Total	Short-term	Long-term	Total	Short-term	Long-term	Total
ESTABLISHMENTS, CAPACITY AND EMPLOYMENT									
<i>September quarter 1993—</i>									
Establishments	12	5	17	26	14	40	12	15	27
Capacity									
On-site vans	9	1	10	60	28	88	57	122	179
Other powered sites	182	118	300	934	253	1,187	593	920	1,513
Unpowered sites	124	42	166	343	129	472	264	203	467
Cabins, flats, etc.	18	—	18	19	4	23	42	166	208
<i>Total capacity</i>	<i>333</i>	<i>161</i>	<i>494</i>	<i>1,356</i>	<i>414</i>	<i>1,770</i>	<i>956</i>	<i>1,411</i>	<i>2,367</i>
Sites occupied by long-term guests	13	18	31	42	88	130	50	722	772
Other sites permanently reserved	1	—	1	274	4	278	107	12	119
Employment (persons)	19	6	25	58	21	79	38	46	84
<i>September quarter 1994—</i>									
Establishments	14	3	17	27	12	39	12	15	27
Capacity									
On-site vans	10	3	13	73	34	107	60	126	186
Other powered sites	253	51	304	932	223	1,155	617	891	1,508
Unpowered sites	150	16	166	332	134	466	278	203	481
Cabins, flats, etc.	12	—	12	22	5	27	43	167	210
<i>Total capacity</i>	<i>425</i>	<i>70</i>	<i>495</i>	<i>1,359</i>	<i>396</i>	<i>1,755</i>	<i>998</i>	<i>1,387</i>	<i>2,385</i>
Sites occupied by long-term guests	18	5	23	38	89	127	65	782	847
Other sites permanently reserved	—	—	—	271	1	272	114	13	127
Employment (persons)	22	5	27	58	17	75	39	49	88
SITE NIGHTS OCCUPIED									
<i>September quarter 1993</i>	<i>4,808</i>	<i>2,738</i>	<i>7,546</i>	<i>42,371</i>	<i>10,486</i>	<i>52,857</i>	<i>24,740</i>	<i>81,427</i>	<i>106,167</i>
<i>1994</i>									
July	1,770	320	2,090	12,820	3,450	16,270	7,504	27,675	35,179
August	1,924	299	2,223	14,002	3,798	17,800	8,677	28,729	37,406
September	2,589	414	3,003	15,223	3,726	18,949	10,294	28,875	39,169
<i>September quarter 1994</i>	<i>6,283</i>	<i>1,033</i>	<i>7,316</i>	<i>42,045</i>	<i>10,974</i>	<i>53,019</i>	<i>26,475</i>	<i>85,279</i>	<i>111,754</i>
SITE OCCUPANCY RATES (per cent)									
<i>September quarter 1993</i>	<i>15.7</i>	<i>18.5</i>	<i>16.6</i>	<i>34.0</i>	<i>27.5</i>	<i>32.5</i>	<i>28.1</i>	<i>62.7</i>	<i>48.8</i>
<i>1994—</i>									
July	13.4	14.7	13.6	30.4	28.1	29.9	24.3	64.4	47.6
August	14.6	13.8	14.5	33.2	30.9	32.7	28.0	66.8	50.6
September	20.3	19.7	20.2	37.3	31.4	36.0	34.4	69.4	54.7
<i>September quarter 1994</i>	<i>16.1</i>	<i>16.0</i>	<i>16.1</i>	<i>33.6</i>	<i>30.1</i>	<i>32.8</i>	<i>28.8</i>	<i>66.8</i>	<i>50.9</i>
GUEST ARRIVALS									
<i>September quarter 1993</i>	<i>5,101</i>	<i>1,190</i>	<i>6,291</i>	<i>16,484</i>	<i>3,076</i>	<i>19,560</i>	<i>14,266</i>	<i>12,785</i>	<i>27,051</i>
<i>1994—</i>									
July	1,323	108	1,431	5,492	659	6,151	2,424	3,662	6,086
August	1,606	111	1,717	4,505	958	5,463	3,498	4,522	8,020
September	2,519	207	2,726	5,970	1,143	7,113	5,587	5,366	10,953
<i>September quarter 1994</i>	<i>5,448</i>	<i>426</i>	<i>5,874</i>	<i>15,967</i>	<i>2,760</i>	<i>18,727</i>	<i>11,509</i>	<i>13,550</i>	<i>25,059</i>
TAKINGS FROM ACCOMMODATION (\$'000)									
<i>September quarter 1993</i>	<i>71</i>	<i>16</i>	<i>87</i>	<i>314</i>	<i>93</i>	<i>407</i>	<i>220</i>	<i>1,032</i>	<i>1,253</i>
<i>1994—</i>									
July	24	3	27	163	27	190	83	369	452
August	22	2	24	98	32	130	93	359	453
September	32	4	36	124	39	164	139	390	529
<i>September quarter 1994</i>	<i>78</i>	<i>9</i>	<i>87</i>	<i>385</i>	<i>99</i>	<i>484</i>	<i>315</i>	<i>1,118</i>	<i>1,433</i>

TABLE 11 — CARAVAN PARKS BY STATISTICAL DIVISION, WESTERN AUSTRALIA—continued

Particulars	Central (SD)			Pilbara (SD) and Kimberley (SD)			Western Australia		
	Short-term	Long-term	Total	Short-term	Long-term	Total	Short-term	Long-term	Total
ESTABLISHMENTS, CAPACITY AND EMPLOYMENT									
September quarter 1993 -									
Establishments	43	11	54	25	15	40	197	117	314
Capacity									
On-site vans	308	109	417	85	160	245	1,144	1,070	2,214
Other powered sites	2,871	743	3,614	1,558	1,597	3,155	11,468	7,567	19,035
Unpowered sites	692	226	918	978	393	1,371	3,988	1,945	5,933
Cabins, flats, etc.	311	37	348	91	62	153	820	532	1,352
Total capacity	4,182	1,115	5,297	2,712	2,212	4,924	17,420	11,114	28,534
Sites occupied by long-term guests	330	219	549	204	539	743	1,228	3,777	5,005
Other sites permanently reserved	140	21	161	6	7	13	1,914	277	2,191
Employment (persons)	175	38	213	113	74	187	665	396	1,061
September quarter 1994—									
Establishments	42	11	53	27	15	42	205	107	312
Capacity									
On-site vans	305	123	428	100	186	286	1,126	1,143	2,269
Other powered sites	2,961	802	3,763	1,935	1,467	3,402	12,206	7,238	19,444
Unpowered sites	667	283	950	871	385	1,256	4,243	1,963	6,206
Cabins, flats, etc.	296	47	343	102	68	170	870	564	1,434
Total capacity	4,229	1,255	5,484	3,008	2,106	5,114	18,445	10,908	29,353
Sites occupied by long-term guests	272	225	497	266	468	734	1,275	3,798	5,073
Other sites permanently reserved	137	20	157	4	13	17	2,068	183	2,251
Employment (persons)	196	43	239	126	70	196	731	395	1,126
SITE NIGHTS OCCUPIED									
September quarter 1993	209,385	40,885	250,270	128,808	97,962	226,770	638,120	502,322	1,140,442
1994 -									
July	74,278	14,067	88,345	60,339	35,357	95,696	236,496	169,774	406,270
August	74,770	15,264	90,034	54,937	35,635	90,572	234,696	172,583	407,279
September	53,713	14,682	68,395	32,167	26,873	59,040	202,380	165,899	368,279
September quarter 1994	202,761	44,013	246,774	147,443	97,865	245,308	673,572	508,256	1,181,828
SITE OCCUPANCY RATES (per cent)									
September quarter 1993	54.4	39.9	51.4	51.6	48.1	50.1	40.0	49.1	43.5
1994 -									
July	56.7	36.2	52.0	64.7	54.2	60.4	41.4	50.2	44.6
August	57.0	39.2	53.0	58.9	54.6	57.1	41.0	51.0	44.8
September	42.3	39.0	41.6	35.6	42.5	38.5	36.6	50.7	41.8
September quarter 1994	52.1	38.1	48.9	53.3	50.5	52.1	39.7	50.6	43.8
GUEST ARRIVALS									
September quarter 1993	117,239	19,409	136,648	89,421	32,165	121,586	285,641	86,823	372,464
1994—									
July	41,201	6,938	48,139	36,845	13,562	50,407	100,359	30,524	130,883
August	39,571	6,479	46,050	33,605	13,426	47,031	95,493	31,558	127,051
September	33,070	5,226	38,296	19,653	7,657	27,310	88,857	28,437	117,294
September quarter 1994	113,842	18,643	132,485	90,103	34,645	124,748	284,709	90,519	375,228
TAKINGS FROM ACCOMMODATION (\$'000)									
September quarter 1993	2,822	484	3,306	1,826	1,349	3,176	7,100	5,725	12,825
1994—									
July	1,129	163	1,292	771	497	1,268	2,888	2,047	4,936
August	1,047	173	1,220	717	533	1,249	2,566	2,125	4,691
September	819	153	972	389	391	781	2,229	2,084	4,313
September quarter 1994	2,995	489	3,484	1,877	1,421	3,298	7,684	6,256	13,940

TABLE 12 — VISITOR HOSTELS BY STATISTICAL DIVISION, WESTERN AUSTRALIA

<i>Particulars</i>	<i>Perth (SD)</i>	<i>South-West (SD)</i>	<i>Central (SD)</i>	<i>Kimberley (SD)</i>	<i>Balance of State</i>	<i>Western Australia</i>
ESTABLISHMENTS, CAPACITY AND EMPLOYMENT						
<i>September quarter 1993—</i>						
Establishments	18	10	7	7	10	52
Bed spaces	1,133	468	362	350	528	2,841
Employment (persons)	78	19	11	20	18	146
<i>September quarter 1994—</i>						
Establishments	19	12	7	6	12	56
Bed spaces	1,160	547	412	326	597	3,042
Employment (persons)	72	20	11	25	29	157
GUEST NIGHTS						
<i>September quarter 1993</i>	<i>47,383</i>	<i>5,107</i>	<i>11,705</i>	<i>23,190</i>	<i>9,071</i>	<i>96,456</i>
<i>1994—</i>						
July	17,557	2,456	4,175	8,030	3,563	35,781
August	16,600	1,695	3,786	7,139	3,165	32,385
September	18,051	2,099	3,889	5,894	4,301	34,234
<i>September quarter 1994</i>	<i>52,208</i>	<i>6,250</i>	<i>11,850</i>	<i>21,063</i>	<i>11,029</i>	<i>102,400</i>
BED OCCUPANCY RATES (per cent)						
<i>September quarter 1993</i>	<i>45.5</i>	<i>11.9</i>	<i>35.1</i>	<i>72.0</i>	<i>18.7</i>	<i>36.9</i>
<i>1994—</i>						
July	48.8	14.5	32.7	79.5	19.3	37.9
August	46.2	10.0	29.6	70.6	17.1	34.3
September	51.9	12.8	31.5	60.3	24.0	37.5
<i>September quarter 1994</i>	<i>48.9</i>	<i>12.4</i>	<i>31.3</i>	<i>70.2</i>	<i>20.1</i>	<i>36.6</i>
GUEST ARRIVALS						
<i>September quarter 1993</i>	<i>10,906</i>	<i>3,234</i>	<i>4,409</i>	<i>5,217</i>	<i>4,695</i>	<i>28,461</i>
<i>1994—</i>						
July	4,645	1,431	1,591	2,247	2,413	12,327
August	4,531	1,109	1,246	2,011	1,725	10,622
September	5,131	1,348	1,501	1,881	2,464	12,325
<i>September quarter 1994</i>	<i>14,307</i>	<i>3,888</i>	<i>4,338</i>	<i>6,139</i>	<i>6,602</i>	<i>35,274</i>
AVERAGE LENGTH OF STAY (days)						
<i>September quarter 1993</i>	<i>4.3</i>	<i>1.6</i>	<i>2.7</i>	<i>4.4</i>	<i>1.9</i>	<i>3.4</i>
<i>1994—</i>						
July	3.8	1.7	2.6	3.6	1.5	2.9
August	3.7	1.5	3.0	3.5	1.8	3.0
September	3.5	1.6	2.6	3.1	1.7	2.8
<i>September quarter 1994</i>	<i>3.6</i>	<i>1.6</i>	<i>2.7</i>	<i>3.4</i>	<i>1.7</i>	<i>2.9</i>
TAKINGS FROM ACCOMMODATION (\$'000)						
<i>September quarter 1993</i>	<i>533</i>	<i>57</i>	<i>117</i>	<i>255</i>	<i>76</i>	<i>1,038</i>
<i>1994—</i>						
July	199	26	44	87	35	391
August	191	17	40	86	32	365
September	208	21	41	71	40	380
<i>September quarter 1994</i>	<i>598</i>	<i>64</i>	<i>124</i>	<i>243</i>	<i>107</i>	<i>1,136</i>

EXPLANATORY NOTES

- *****
- INTRODUCTION** 1 This publication contains data for Western Australia from a quarterly survey of tourist accommodation establishments. The period covered by the latest survey is the 3 months ended 30 September 1994.
- SCOPE** 2 Tourist accommodation establishments currently included in the survey comprise two groups:
- Establishments which provide predominantly short-term accommodation (i.e. for periods of less than 2 months) to the general public. These include:
 - Hotels, motels and guest houses, with facilities* being hotels licensed to operate a public bar and motels, private hotels and guest houses all of which provide a bath (or shower) and toilet in most guest rooms and have breakfast available for guests.
 - Hotels and guest houses, without facilities* which do not provide a bath (or shower) and toilet in most guest rooms but do have breakfast available to guests.
- NOTE: From December quarter 1993, hotel, motel and guest house establishments with fewer than five rooms have been formally excluded from the scope of this statistical collection. This change in scope resulted in the exclusion of four establishments which in the September quarter 1993 Survey aggregates for Western Australia represented 0.9 per cent of hotel, motel and guest house establishments but accounted for less than 0.1 per cent of accommodation capacity, occupancy and takings respectively.
- Holiday flats, units and houses* (excluding establishments predominantly operated on a time share basis) which are operated by owners or managers who have sole letting rights to at least five flats, units or houses or by real estate agents for short-term letting. They are mainly self-contained in terms of cooking, bath (or shower) and toilet facilities and do not have breakfast available for guests. Data for holiday flats, units and houses include short-term owner occupation as well as paying guest occupation.
 - Visitor hostels* which provide accommodation to visitors on a bed basis (rather than by the room). This category does not include establishments providing charity type accommodation (e.g. Salvation Army hostels) nor hotels, motels and guest houses without in-room facilities which provide accommodation on a per room basis.
- *Caravan parks* which provide either predominantly short-term (i.e. for periods of less than 2 months) or predominantly long-term (i.e. for periods of 2 months or more) accommodation to the general public and which provide powered sites for caravans and toilet, shower and laundry facilities for guests.
- 3 Data collected and published for each type of establishment (other than holiday flats, units and houses) include both long-term and short-term guests at these establishments.
- 4 Establishments which provide more than one type of accommodation (e.g. a motel with attached caravan park) are treated as two or more separate establishments. However, self-contained units, flats, cabins, etc. attached to hotels, motels or to caravan parks are included in the capacity for those establishments and not treated as separate holiday flat, unit or house establishments.
- DEFINITIONS** 5 *Number of establishments.* For hotels, motels and guest houses, caravan parks and visitor hostels, the number of establishments within the scope of the survey which operated for any part of the survey period, or which closed temporarily for the quarter for seasonal reasons.
- 6 *Number of letting entities.* For holiday flats, units and houses, the number of owners, managers or real estate agents within the scope of the survey who operated for any part of the survey period.
- 7 Capacity in terms of *Guest rooms, Bed spaces, Holiday units or Caravan park sites, etc.* is the maximum number available to accommodate paying guests during the survey period. Capacity closed temporarily for seasonal reasons is included.
- 8 *Bed spaces.* Three-quarter beds are counted as one bed space; double beds as two bed spaces. Cots are excluded.

EXPLANATORY NOTES—*continued*DEFINITIONS—*continued*

9 *Total caravan park capacity* comprises *On-site vans, Other powered sites, Unpowered sites and Cabins, etc.*

10 *Room nights available.* The number of guest rooms available multiplied by the number of days for which they were available during the survey period. Includes operating periods only for establishments closing (other than for seasonal reasons) or opening during the survey period.

11 Occupancy in terms of *Room nights, Unit nights or Site nights occupied* refers to the total number of nights each guest room, holiday unit or caravan park site, etc. was occupied during the survey period.

NOTE: From September quarter 1992, caravan park sites, etc. permanently reserved for 2 months or more at the end of the survey period but only casually occupied by their tenants have been recorded continuously as *Site nights occupied* irrespective of whether the tenants of individual sites were in residence on any particular night. (See also paragraph 14 below). Previously, usage of these sites was recorded as *Site nights occupied* only when their tenants were in the park. Total site occupancy rates from September quarter 1992 are therefore not comparable with those from previous quarters.

12 Occupancy in terms of *Guest nights* refers to the total number of nights each paying guest stayed during the survey period.

13 *Sites occupied by long-term guests.* The total number of sites, etc. occupied at the end of the survey period by guests who have stayed continuously for 2 months or more.

14 *Other sites permanently reserved.* The total number of powered and unpowered sites, on-site vans and cabins, etc. continuously let for 2 months or more by the end of the survey period to tenants who occupy the sites only on a casual or sporadic basis. Separate data for this item are available only from September quarter 1992.

15 *Occupancy rates* represent occupancy expressed as a percentage of total capacity available during the survey period – e.g.

$$\text{Room occupancy rate (\%)} \text{ for the period} = \frac{\text{Room nights occupied}}{(\text{Guest rooms}) \times (\text{No. of days in the period})} \times 100$$

providing that, for establishments closing (other than for seasonal reasons) or opening during the period, the denominator of the above expression includes only operating periods.

16 *Guest arrivals.* The total number of paying guests counted only on the first night they stayed at the accommodation establishment.

17 *Unit lettings.* The total number of times a holiday flat, unit or house was occupied by a new tenant, counted only on the first night it was occupied by the new tenant.

18 *Average length of stay* is expressed in number of days and is calculated:

- for hotels, motels and guest houses and for visitor hostels, by dividing *Guest nights* by *Guest arrivals* and
- for holiday flats, units and houses, by dividing *Unit nights occupied* by *Unit lettings*.

19 *Takings from accommodation.* Revenue received from the provision of accommodation. Takings from meals are excluded. Takings from accommodation for each month generally represent the takings received during that month. Where payments are received in advance of, or after, the provision of accommodation to guests, the monthly figure for takings from accommodation may not necessarily bear a direct relationship to the number of guests accommodated during the month. Rental and storage fees paid to caravan parks for the keeping of private vans in parks are included in the takings of the month they are received.

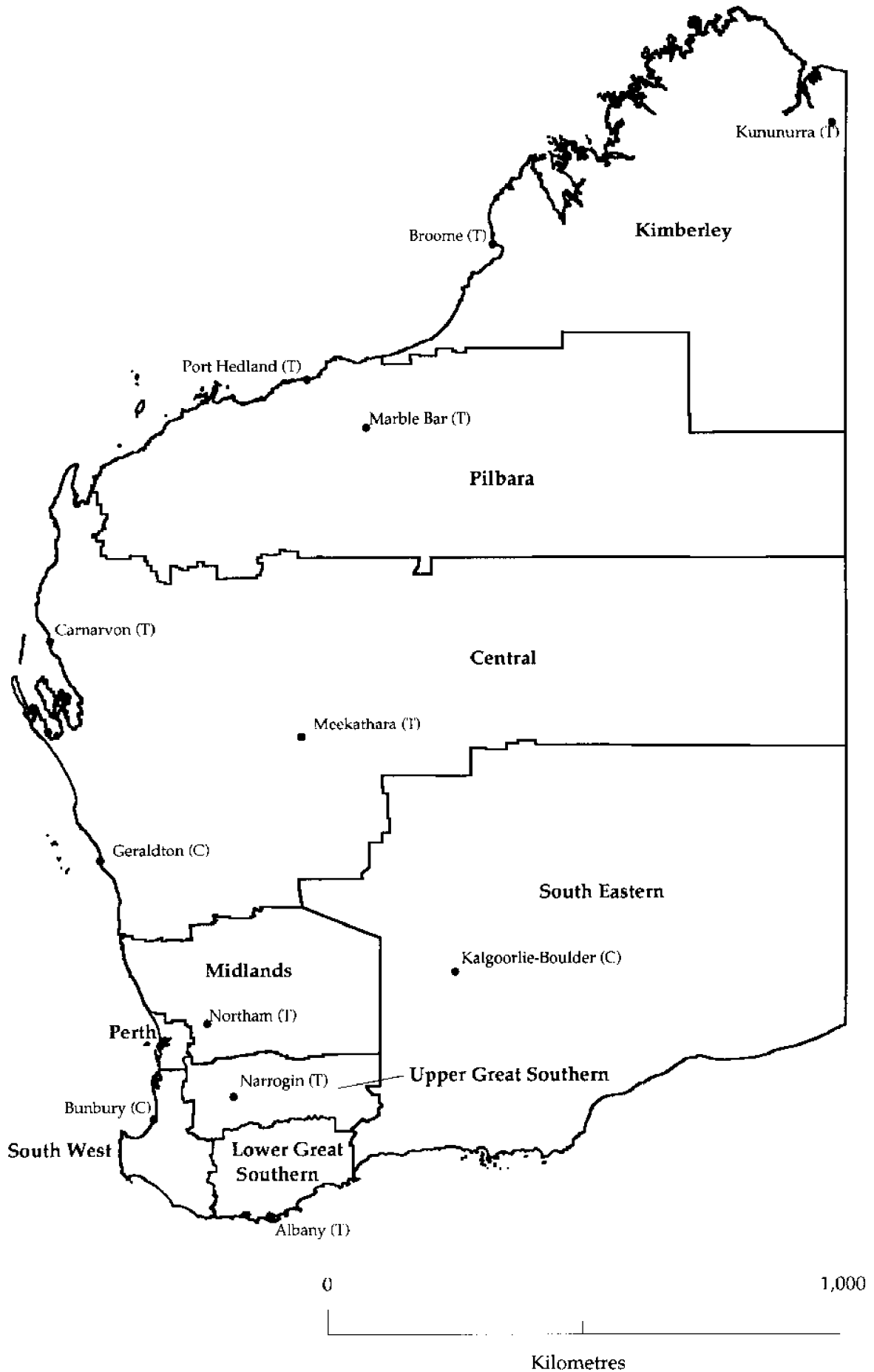
20 *Star grading.* The grading of hotels and motels with facilities based on the classification system used by members of the Australian Automobile Association (AAA). The gradings are allocated according to a points system based on the amenities and facilities available to guests. Details of the grading scheme are contained in the

EXPLANATORY NOTES—continued

DEFINITIONS <i>continued</i>	<p>RACV-RAASA members' publication <i>Accommodation Australia</i>, or the individual tour guides produced by members of the AAA. For the purpose of classifying establishments to a star grading in this publication, 'half' star gradings are ignored (e.g. a two and a half star grading has been shown as two star).</p> <p>21 <i>Employment.</i> The number of persons working at accommodation establishments at the end of the survey period (including working proprietors and those working on other than accommodation activities).</p>
AUSTRALIAN STANDARD GEOGRAPHICAL CLASSIFICATION	<p>22. Statistics presented in this publication have been classified according to the Australian Standard Geographical Classification (ASGC), Edition 2.4. This classification incorporates a number of hierarchic structures of geographic areas. The appropriate spatial units of the main structure of the ASGC used in this publication are defined as follows.</p> <p><i>Statistical Local Areas (SLAs)</i> are the smallest areas for which tourist accommodation data are presented. They are directly comparable with legal Local Government Areas except for the Cities of Perth, Fremantle and Stirling which are obtained by aggregating component Statistical Local Areas.</p> <p><i>Statistical Subdivisions (SSDs).</i> These consist of one or more SLAs and form the intermediate size spatial unit for the presentation of regional data.</p> <p><i>Statistical Divisions (SDs).</i> These consist of one or more SSDs. The divisions are designed to be relatively homogeneous regions characterised by identifiable social and economic units within the region, under the unifying influence of one or more major towns or cities.</p> <p>For more detailed information, refer to the ASGC (1216.0).</p>
UNPUBLISHED STATISTICS	<p>23 The ABS may make available on request certain unpublished tourist accommodation statistics. A charge may be made for this information.</p>
RELATED PUBLICATIONS	<p>24 Publications for Australia, and each State and Territory, are released by the respective offices of the ABS. Tourist accommodation statistics for past quarters are available on request.</p> <p>25 Other ABS publications which may be of interest include:</p> <p style="padding-left: 2em;"><i>Directory of Tourism Statistics</i> (1130.0) (irregular; first and latest issue: 1991)</p> <p style="padding-left: 2em;"><i>Overseas Arrivals and Departures, Australia</i> (3401.0) (monthly)</p> <p style="padding-left: 2em;"><i>Tourism Indicators Australia</i> (8634.0) (quarterly)</p> <p style="padding-left: 2em;"><i>Tourist Accommodation, Australia</i> (8635.0) (quarterly)</p> <p>26 Current publications produced by the ABS are listed in the <i>Catalogue of Publications and Products</i> (1101.0). The ABS also issues the <i>Publications Advice</i> (1105.0) on Tuesdays and Fridays which lists publications to be released in the next few days. Both the <i>Catalogue</i> and <i>Publications Advice</i> are available from any ABS office.</p>
SYMBOLS AND OTHER USAGES	<p>n.a. not available</p> <p>n.p. not available for publication but included in totals where applicable</p> <p>r figure or series revised since previous issue</p> <p>.. not applicable</p> <p>— nil or rounded to zero</p> <p>(C) City</p> <p>(T) Town</p> <p>(S) Shire</p> <p>27 Where figures have been rounded, discrepancies may occur between totals and the sums of the component items.</p>

P. C. KELLY
Deputy Commonwealth Statistician
and Government Statistician

STATISTICAL DIVISIONS, WESTERN AUSTRALIA





For more information...

The ABS publishes a wide range of information on Australia's economic and social conditions. Details are available in the *Catalogue of Publications and Products* is available from any of our Offices (see below for contact details).

Information Consultancy

Information tailored to special needs of clients or in-depth data investigations are provided by the ABS Information Consultancy Services in each of our Offices (available via the contacts below).

National Dial-a-Statistic Line

0055 86 400

(Steadycom P/L premium rate 25c/21.4 secs.)

This number gives 24 hours access, 365 days a year for a range of statistics.

Electronic Data Services

A growing range of our data is available on electronic media. Our Telestats service delivers major economic publications ready to download into your computer on the day of release. Our Ausstats service enables on-line access to a data base of thousands of up-to-date time series. Selected datasets are also available on diskette or CD-rom. For more details on our electronic services, contact Information Services in any of our Offices on the numbers below.

Bookshops and Subscriptions

There are now over 500 titles available from the ABS Bookshops in each of our Offices. The ABS also provides a subscription mailing service through which nominated publications are provided by mail at no additional cost. (Telephone Publications Subscription Service toll free on 008 02 0608 Australia wide).

Sales and Inquiries

Regional Offices

Bookshop Sales

SYDNEY
MELBOURNE
BRISBANE
PERTH
ADELAIDE
HOBART
CANBERRA

Information Enquiries

(02) 268 4611	268 4620
(03) 615 7000	615 7829
(07) 222 6531	222 6350
(09) 360 5140	360 5140
(08) 237 7100	237 7582
(002) 20 5800	20 5800
(06) 207 0326	207 0326

